



Rubber floor coverings and accessories 2024

nora[®]
by Interface[®]





CONTENTS

Introduction	4 – 11
norament® floorings	12 – 27
noraplan® floorings	28 – 47
noracare™ floorings	48 – 53
nora® special floorings	54 – 63
Floorings for extreme requirements	56 – 57
Electrostatically conductive floorings (ec)	58
Electrostatically dissipative floorings (ed)	59 – 61
Acoustic floorings	62 – 63
nora® stairwell solutions	64 – 75
norament® stairtreads	66 – 71
nora® stair accessories	72 – 75
nora® install	76 – 89
Removable floor coverings: norament® 975 LL	76 – 77
Quick installation systems: nora® nTx, dryfix	78 – 84
Installation materials: nora® wet adhesives	85
nora® accessories	86 – 89
nora® clean	90 – 91
nora® pads	90 – 91
nora 4you	92 – 95
Inlays	92 – 93
Planks and tiles	94
Custom colours	95
Technical data	96 – 100
Smart Navigators	101
BIM	102

Interface and nora – your single source providers

Interface Inc. is a global flooring solutions company based in Atlanta, USA. Interface specialises in CO₂-neutral modular carpet tiles, resilient floor coverings including luxury vinyl tiles (LVT) and, since 2018, rubber floorings by nora. This wide range of products offers you the unique opportunity to cover every single area of your building from a single source.

As a market leader in the rubber flooring segment, nora develops and produces unique, premium-quality flooring solutions under the brand name nora by Interface. Architects, principals, end users and installers around the world trust nora rubber flooring solutions for creating healthy living environments and aesthetically pleasing interiors.

nora uses a cutting-edge manufacturing process to produce rubber floorings that combine premium quality with a unique aesthetic and a wide range of functional properties. Different applications place different aesthetic and technical requirements on floorings. nora offers a large selection of floorings to fulfil these requirements and cover every area of your building.

Interface and nora will find the perfect solution for any room and any requirements, from classrooms and conference rooms to retail spaces and public areas, from stairways to laboratories and operating theatres.



Innovative PVC-free rubber floor coverings

nora floor coverings are made by combining high-quality natural and industrial rubber with naturally sourced minerals and colour pigments. The natural rubber used is PEFC certified which means it is officially sourced from sustainably managed forests and harvested under humane working conditions. nora rubber floor coverings are also free from PVC, other halogenated polymers and phthalate plasticizers.

The heat and pressure of the sophisticated vulcanisation process gives nora floor coverings a dense, non-porous surface that maintains its unique functionality and aesthetic for decades. nora floor coverings also offer excellent ergonomic properties and reduce footfall sound for a pleasant acoustic environment. They are easy to clean and meet a wide range of slip-resistance requirements for various applications as well as the strictest fire protection criteria (in accordance with DIN EN 13501).

The flooring portfolio is complemented by a comprehensive range of accessories and unparalleled service, which allows consistent, cross-functional designs for any surface, stairway or building area.

nora rubber floor coverings can be found in a large scope of building types worldwide. The following segments are especially well-represented: Healthcare, Education, Transportation, Industry & Life Sciences, Public Buildings, and Shops & Stores.



Carbon Neutral Enterprise

Interface® is a carbon neutral enterprise with carbon neutral products. These credentials are third-party-certified in accordance with the recognised PAS 2060 standard. This means that we have balanced greenhouse gas emissions throughout our entire enterprise, including all business activities and our entire value chain. This important milestone makes Interface the first and only floor covering manufacturer to achieve carbon neutrality from Scope 1 to 3.

To achieve this, we first measured the carbon emissions of everything we do across our operations and entire value chain. We then focused on reducing our impact through product and manufacturing innovation, something we have a history of doing and will continue to do for decades to come. Finally, we offset the remaining emissions with verified emissions credits, resulting in an absolute balance between the carbon we emit and the offsets we retire. Our target is to become a carbon negative enterprise by 2040.

Carbon Neutral Floors

Like all Interface floor coverings, nora rubber floor coverings are also carbon neutral. This unique holistic approach goes beyond the assessment of greenhouse gas emissions from production and takes into account the entire product life cycle. We can also provide you with a certificate to prove the nora floor coverings in your building are carbon neutral. You can find out more about our third-party-certified Carbon Neutral Floors programme at www.nora.com/carbonneutral.

The circular economy

We are constantly striving to reduce the environmental impact of our products over their entire life cycle. We try to achieve circularity by reusing and recycling materials wherever possible in order to minimize the negative effects of the product life cycle on the environment and human health.



Building and corporate certifications, memberships and cooperation agreements

We take our responsibilities towards the environment and society extremely seriously. Various independent facilities have confirmed this to us in the form of different certificates and awards, not just in Germany but in other countries as well.

Sustainability criteria are becoming more and more important in the realisation of building concepts. In public procurement law they are often mandatory for the tender and decisive for the award of a contract. nora can help you score at green building rating systems.



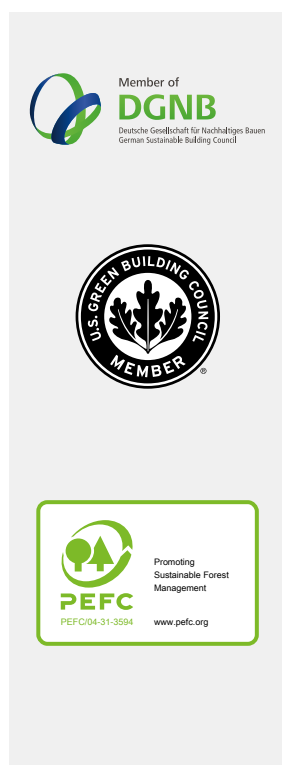
Building certifications

nora® rubber floor coverings, nora® accessories, and nora® installation materials can enhance the sustainability properties of buildings for DGNB (German Sustainable Building Council), LEED (Leadership in Energy and Environmental Design), BREEAM (BRE Environmental Assessment Method), and other certifications.

www.dgnb.de/en/

www.usgbc.org/leed

www.breeam.com/



Memberships and corporate certifications

At nora systems, the production methods and all raw materials are subject to high ecological standards, and nora® products are internationally certified and regularly tested by independent institutes.

In the field of the environment and sustainability, nora systems is one of the leading companies in its sector and is among the initiators of the German Sustainable Building Council (DGNB) and a member of the U.S. Green Building Council (USGBC). nora was the first resilient floor covering manufacturer to publish Environmental Product Declarations (EPDs), and nora was also one of the first resilient flooring manufacturers to receive ISO 14001 certification for our environmental management systems.

Furthermore, nora is the first rubber flooring manufacturer to be awarded with the PEFC certification. All natural rubber we use in our products as a core component comes from ecologically, economically and socially sustainably managed rubber plantations.

Research and innovation are important parts of nora's corporate policy. For this reason, the "German Stifterverband" awarded nora the seal "Innovative through Research", which honours researching companies for the special responsibility they assume for the state and society.



Eco-labels, approvals and Environmental Product Declarations



www.blauer-engel.de/uz120

The Blue Angel

One of the world's most famous and oldest eco-label, initiated by the Cabinet of Germany. This guarantees that products fulfil particularly stringent environmental, health, and performance requirements, including emission and constituent specifications. Approval criteria: DE-UZ 120



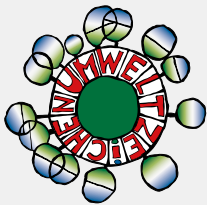
Cradle to Cradle

Cradle to Cradle Certified® is awarded by the Cradle to Cradle Products Innovation Institute and is the world's most advanced science-based, multi-attribute certification program for designing, making and verifying materials and products that are safe, circular and responsibly made. Cradle to Cradle Certified® products are awarded certification based upon their performance across five critical areas of sustainability: Material Health, Product Circularity, Clean Air & Climate Protection, Water & Soil Stewardship, and Social Fairness. Approval criteria: Cradle to Cradle Certified® Products Program



Greenguard Gold

Greenguard Gold Certification promotes the protection and safety of sensitive persons in regards to indoor air quality. Certified products fulfil stringent emission standards, affording an invaluable contribution to the quality of indoor air. Approval criteria: UL 2818 Standard for Chemical Emissions for Building Materials



Austrian eco-label

The Austrian eco-label is awarded by the Austrian Ministry of Agriculture, Forestry, Environment, and Water Management. It provides information on the environmental impact of consumer goods that arises from their production, usage and disposal. Certified floor coverings exert as small an impact as possible on the environment and health over their whole life cycle. Approval criteria: UZ 42



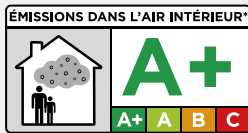
ecobau

The ecobau association has been promoting sustainable and healthy building in Switzerland since 2005. ecobau members include public building authorities from the federal government, cantons and cities, as well as organizations such as KBOB, CRB and educational institutions. Together they develop planning tools for ecological construction to support building authorities, planners and architects. The environmental impact of different building materials is assessed from production to disposal. Approval criteria: Methodology building materials ecobau



M1

The Finnish test mark M1 is regarded as the highest certification for building products in the Scandinavian region. Besides stringent emission thresholds for total volatile organic compounds (TVOCs), the label also includes a sensory odour test. Approval criteria: Classification of Indoor Climate 2018 and the Classification of Building Materials: General Instructions.



Etiquetage

In France, building products are classified according to their potential for emissions.

The object is to eliminate risks to the health of persons inside the building.

Approval criteria: French VOC label – Emissions dans l'air intérieur (Décret n° 2011-321)



Byggvarubedömningen

The Swedish institute Byggvarubedömningen assesses the sustainability of building products with respect to their emissions, constituents, and production process. The products are classified as "Recommended", "Accepted", or "To be Avoided".

Approval criteria: Byggvarubedömningen's criteria for chemical content and life cycle aspects



Indoor Air Comfort GOLD

The Eurofins certification Indoor Air Comfort GOLD combines emissions requirements of the most important European eco-labels in one certificate. With this international label, planners, building owners and architects can specifically use products that do not compromise indoor air by giving off impurities. It means that more purposefully selected products can be used that have been certified thanks to their low emission levels and their sustainable properties.



Singapore Greenbuilding

Singapore Greenbuilding sets high standards and benchmarks for green building solutions. It certifies eco-friendly building products that are resource-efficient, potentially more economical and lower the environmental impact. This certification also considers if the product provides better indoor air quality for a healthier and more productive workplace in buildings. Products can be rated from Good to Very Good, Excellent to Leader.

Approval criteria: Singapore Green Building Product Certification Scheme



Global GreenTag

Global GreenTag is a multi-criteria, green product rating and certification system. It examines the Life Cycle Assessment (LCA) of a product and assesses different benefits as for example greenhouse gas emissions, human health and ecotoxicity as well as biodiversity and resource consumption. Products are awarded on the following three levels: A, B and C.

Approval criteria: GreenTag Standard v4.0



EPDs from Institut Bauen und Umwelt e.V.

EPDs (Environmental Product Declarations) are issued on the basis of international standards by the Institut Bauen und Umwelt e.V. (IBU). They document the ecological aspects of a product over its whole life cycle. An EPD is a neutral, but invaluable source of information in the choice of sustainable building products.

Explore our product lines

Together, our norament, noraplan and noracare product lines as well as our special floorings constitute an extraordinarily practical synthesis of design, functionality and environmental-friendliness. We are convinced that we have the perfect solution for our customers, whatever their needs are and whatever creative ideas they have. Over the following pages, you can find out more about our product portfolio and discover how to create visual accents with nora floor coverings and system solutions.

norament: Performance and long life for sophisticated interiors

norament floor coverings are real all-rounders. They are available as tiles and can be installed on surfaces that are subject to the most extreme levels of stress, e. g. industrial spaces. With a service life of 50 years, norament floor coverings are very robust. The product portfolio includes a range of unique designs including the classic pastille pattern (norament 926/825) and norament 926 pado, a modern take on the ancient Terrazzo technique.

noraplan: A wide range of designs and colours for unlimited creativity

noraplan floor coverings are available as both tiles and sheets. They come in a wide range of designs and colours for almost unlimited creativity. With a palette of 48 colours, noraplan signa offers the broadest shade spectrum of all nora floor coverings. These floor coverings have a service life of 30 years and can be used in an extensive scope of environments, including hospitals and educational facilities.

noracare: The 100 % recyclable floor covering solution with innovative surface technology

noracare floor coverings are available as sheets in two designs. The innovative silk-matte surface is extremely resistant and suitable for areas where there is heavy use of chemicals and disinfectants. This floor covering is very easy to clean and is fully recyclable. Residual material and offcuts can be used to produce new floor coverings in keeping with the concept of the circular economy.

Special floorings

nora has developed various special floor coverings for areas that are subject to special technical standards and requirements. There is a huge range of floorings, including acoustic floor coverings that improve footfall sound absorption by 20 dB, electrostatically dissipative and conductive floorings, as well as special solutions for ice rinks, horse stables or golf facilities.

In addition, nora offers removable floor coverings, quick installation systems, stairway solutions, a comprehensive range of flooring accessories and a wealth of installation materials.







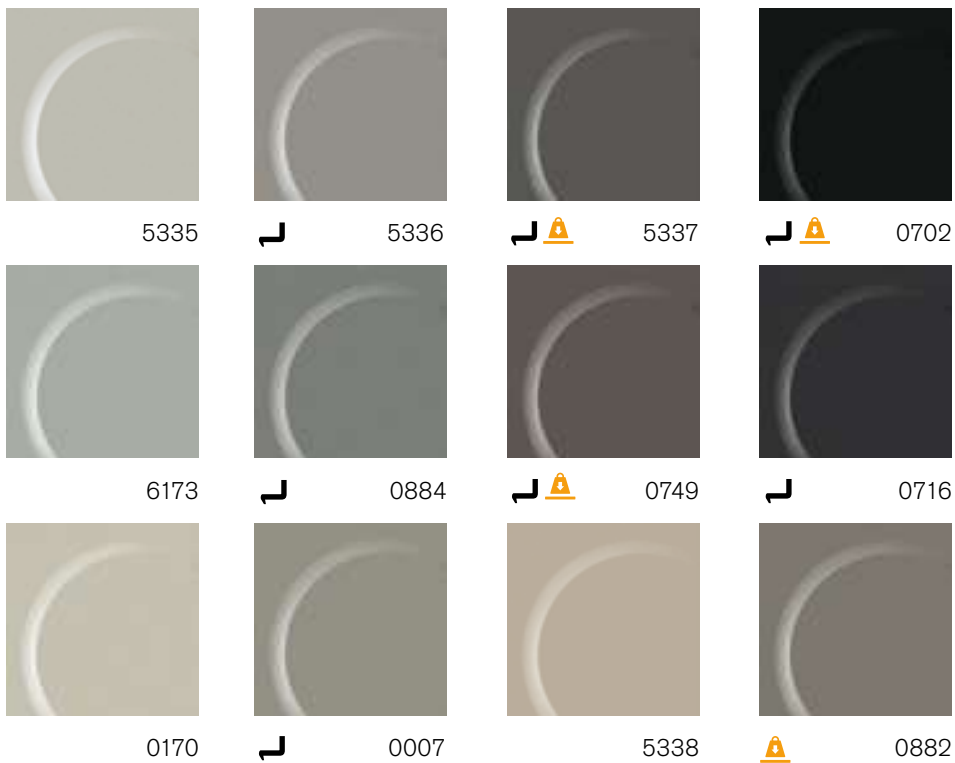
norament®

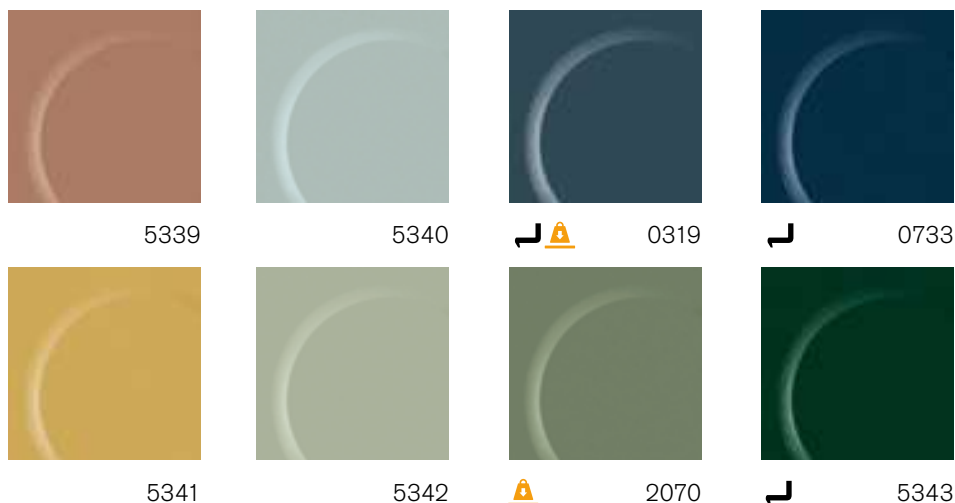
norament, the classic among rubber floor coverings, represents absolute top quality and functionality. The standard square tile sizes of 1004 x 1004 mm are available in a wide range of colour and surface designs. Get to know our norament product portfolio on the following pages, and feel free to call your personal contact with any questions you may have.



One-coloured, classic round pastille.

norament® 926 · for use in extremely heavy-traffic areas



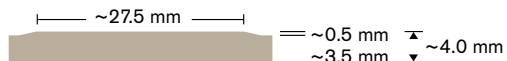


norament® 926

20

Art. 926/354

□ ~1004 mm x 1004 mm



nora® profile connection dimension: E + U

Resists most oils and greases

Slip resistant R9

These colours can also be delivered as:

└ Stairtread norament® 926, page 66

⚠ norament® 992 for extreme requirements, page 56

Custom colours are available on request. Please ask for minimum quantities and delivery times.

norament® 825 · for use in heavy-traffic areas

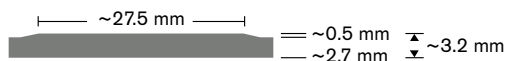


norament® 825

8

Art. 825/1902

□ ~501 mm x 501 mm



nora® profile connection dimension: D + U

Slip resistant R9

Custom colours are available on request. Please ask for minimum quantities and delivery times.



norament® 926 grano

A granular design rich in contrast with a hammerblow surface or a cubic structure for use in extremely heavy-traffic areas.



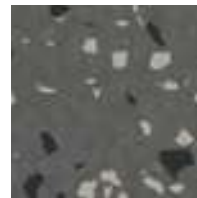
⚡️👤🟢 5301



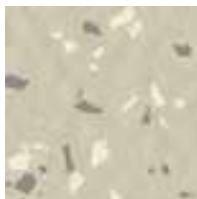
👤🟢🟡⚠️ 5302



🟦👤🟢🟡⚠️ 5303



🟦⚡️👤🟢🟡⚠️ 5304



🟢 5305



⚡️👤🟢 5306



🟢 5307



👤🟢⚠️ 5308



5309



🟦 5310



🟦 5311



5312



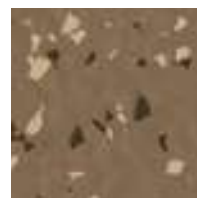
👤 5313



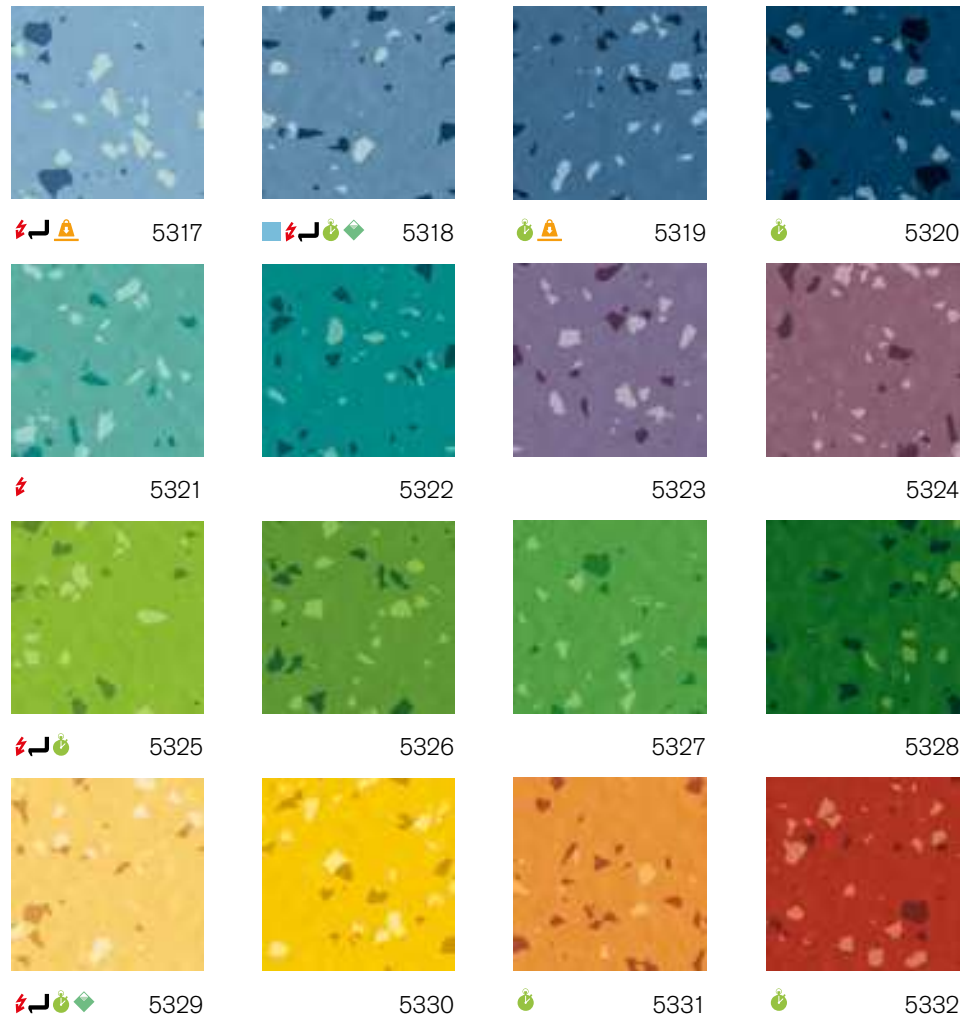
👤 5314



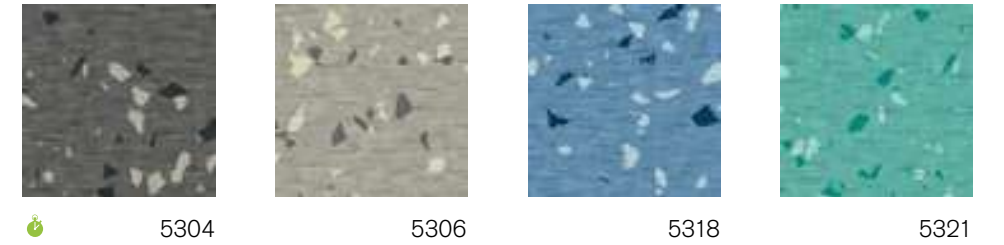
👤🟢 5315



5316



norament® 926 grano · cubic structure



norament® 926 grano



Art. 926 grano/1870

□ ~1004 mm x 1004 mm



nora® profile connection dimension: E + U

Resists most oils and greases

Slip resistant R10

norament® 926 grano · hammerblow surface

norament® 926 grano



Art. 926 grano/1880

□ ~1004 mm x 1004 mm








nora® profile connection dimension: E + U

Resists most oils and greases

Slip resistant R9

These colours can also be delivered as:

-  norament® 928 grano ed
electrostatically dissipative, page 59
-  Stairtread norament® 926 grano, page 67
-  norament® 926 grano nTx
self-adhesive, page 80
-  norament® 975 LL
removable, page 76
-  norament® 992 grano
for extreme requirements, page 57

norament® 926 grano



Art. 926 grano/1911

□ ~610 mm x 610 mm



nora® profile connection dimension: E + U

Resists most oils and greases

Slip resistant R9

Additional information on nora® nTx can also be found at www.nora.com/ntx.

Custom colours are available on request. Please ask for minimum quantities and delivery times.



Future Lab / Training Centre Science Park C4, Weiherhammer, Germany

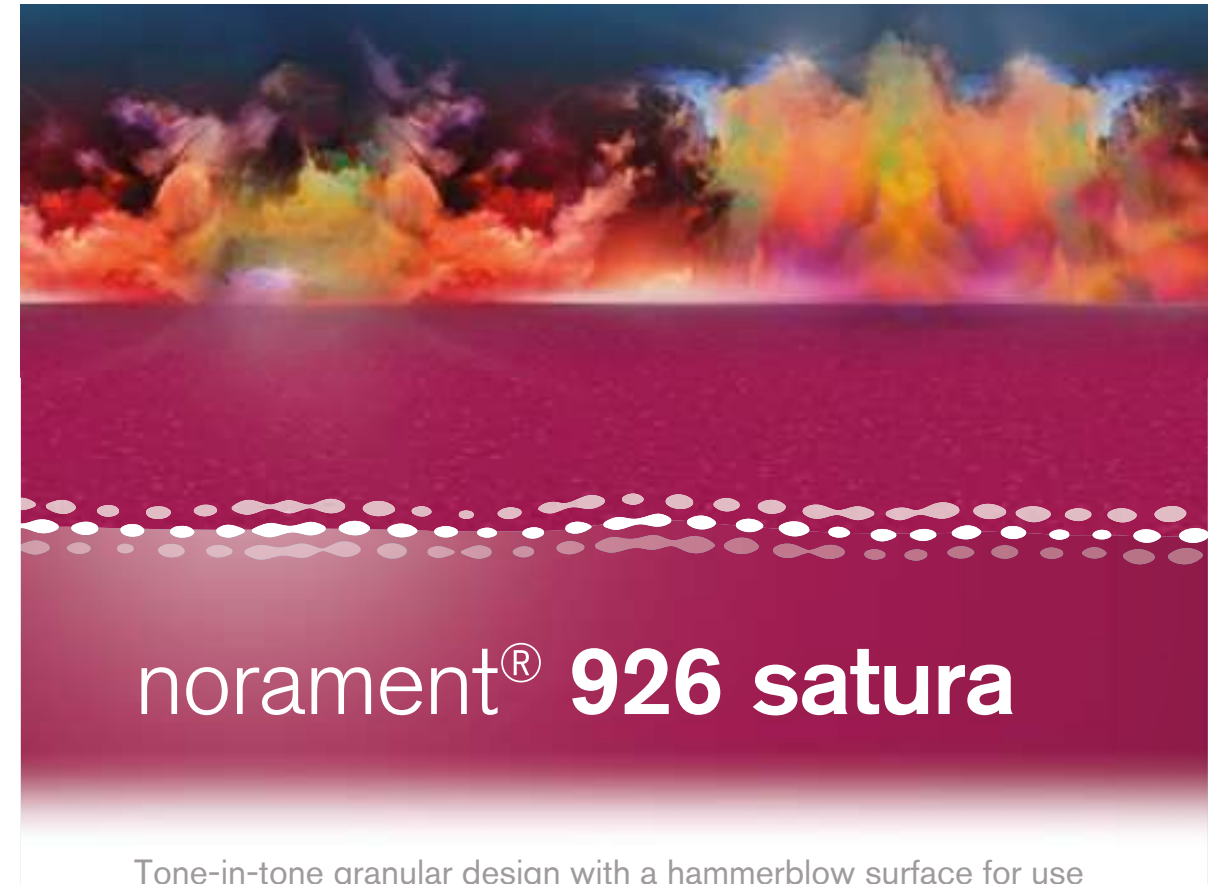


Hospital Karlsruhe, Germany

© Elmar Witt

norament®

18 norament®



norament® 926 satura

Tone-in-tone granular design with a hammerblow surface for use in extremely heavy-traffic areas.



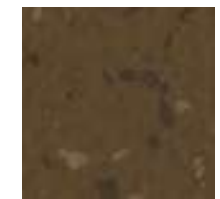
5101



5102



5103



5104



5105



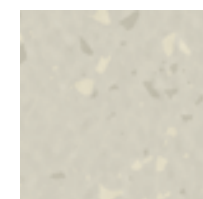
5106



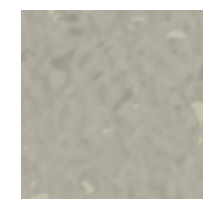
5107



5108



5109



5110



5111



5112



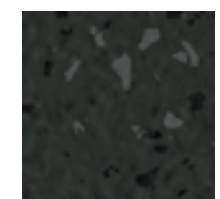
5113



5114



5115



5116



norament® 926 satura

32

Art. 926 satura/1880

□ ~1004 mm x 1004 mm



nora® profile connection dimension: E + U

Resists most oils and greases

Slip resistant R9

These colours can also be delivered as:

Stairtread norament® 926 satura, page 68

norament® 926 satura nTx self-adhesive, page 81

norament® 975 LL removable, page 76

Additional information on nora® nTx can also be found at www.nora.com/ntx.

Custom colours are available on request.

Please ask for minimum quantities and delivery times.



norament® 926 pado

A vivid granular design inspired by ancient terrazzo with a slightly structured two-tone surface for maximum demands.



5501



5502



5503



5504



5505



*5506



*5507



5508



5509



5510



*5511



5512



5513



5514



*5515



*5516

norament® 926 pado
 16
Art. 926 pado/3167

□ ~1004 mm x 1004 mm



nora® profile connection dimension: E + U

Resists most oils and greases

Slip resistant R10

* This colour contains post-production recycled granulate from rubber flooring.

 Also available as norament® 926 pado nTx, page 78

Additional information on nora® nTx can also be found at www.nora.com/ntx.

Custom colours are available on request. Please ask for minimum quantities and delivery times.





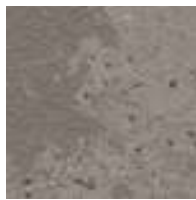
Slightly structured two-tone surface combined with an irregular grain design and modern marbling for maximum demands. No two tiles are the same – each tile is totally unique.



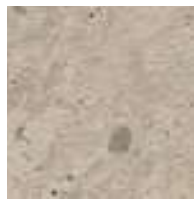
reddot winner 2021



5351



5352



5353



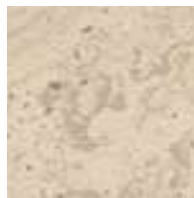
5354



5355



5356



5357



5358

norament® 926 castello

8

Art. 926 castello/3167

□ ~1004 mm x 1004 mm


 ~3.5 mm

nora® profile connection dimension: E + U

Resists most oils and greases

Slip resistant R10


 norament® 926 castello nTx
 self-adhesive, page 81

Variations in colour and design, even within one production batch, define the product's aesthetic character.

Additional information on nora® nTx can also be found at www.nora.com/ntx.

Custom colours are available on request.

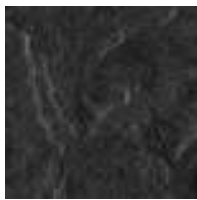
Please ask for minimum quantities and delivery times.



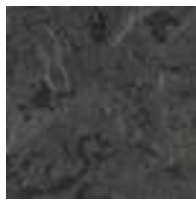


norament® 926 arago

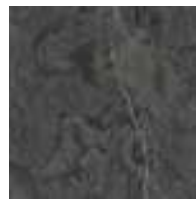
Flat, direction-oriented relief structure with fine grain design and modern marbling for maximum demands. No two tiles are the same – each tile is totally unique.



5170



5171



5172



5173



5174



5175



5176



5177



5178



5179



5180



5181

norament® 926 arago
Art. 926 arago/3118

□ ~1004 mm x 502 mm

~3.5 mm

nora® profile connection dimension: E + U

Resists most oils and greases

Slip resistant R10

norament® 926 arago with chamfered edges
Art. 926 arago/3119

□ ~998 mm x 497 mm

~3.5 mm

nora® profile connection dimension: E + U

Resists most oils and greases

Slip resistant R10

These colours can also be delivered as:

Stairtread norament® 926 arago, page 69

 norament® 926 arago nTx
self-adhesive, page 81

Order-related smaller formats can be cut for individual installation combinations from norament® 926 arago tiles with the standard dimensions of 1004 mm x 502 mm.

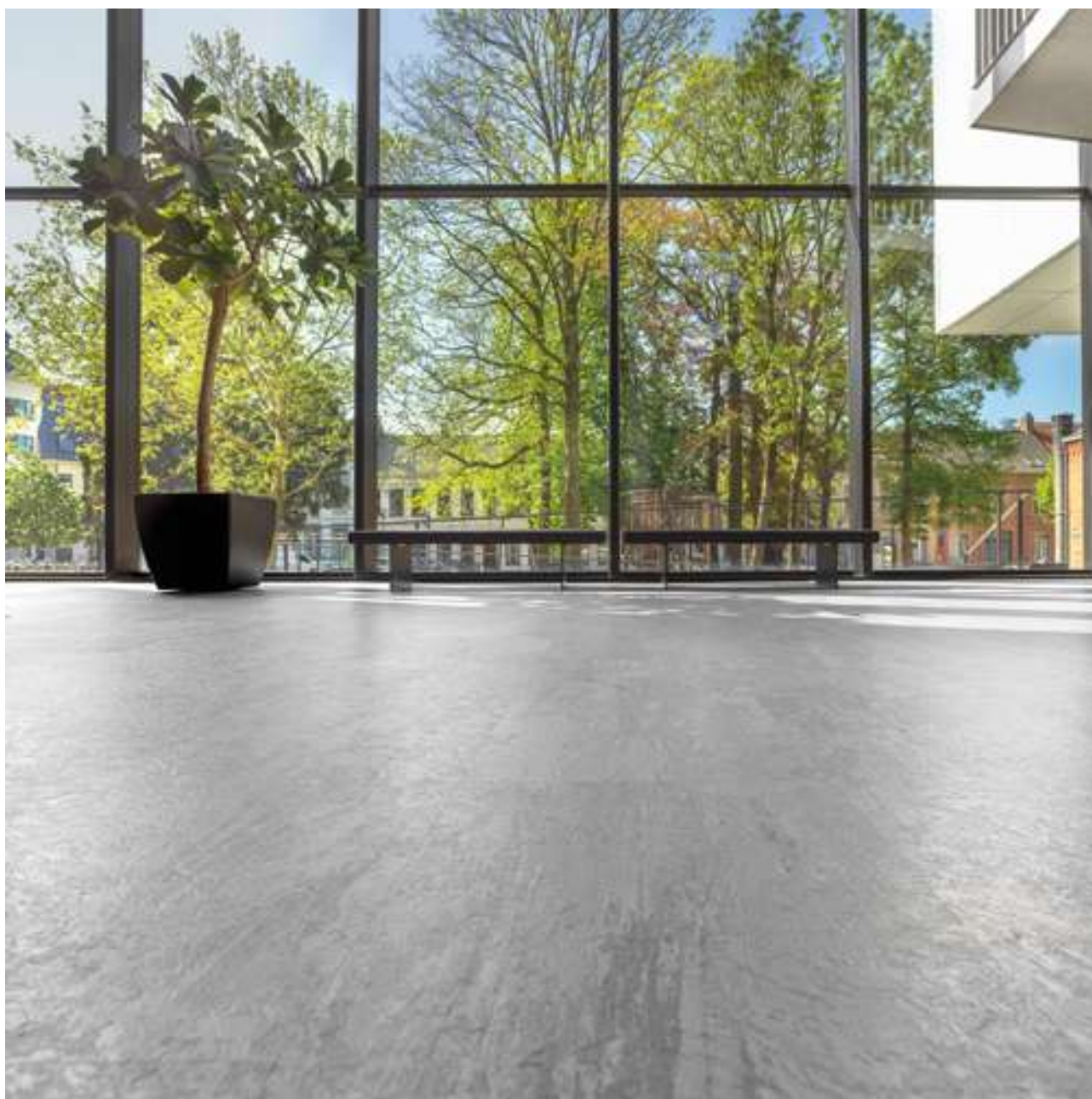
Variations in colour and design, even within one production batch, define the product's aesthetic character.

We supply tiles with chamfered edges on request such that the tile character of the installed floor covering is even more emphasized.

Additional information on nora® nTx can also be found at www.nora.com/ntx.

Custom colours are available on request.

Please ask for minimum quantities and delivery times.





norament® 926 kivo

Irregular grain design with a slightly structured two-tone surface for high demands.



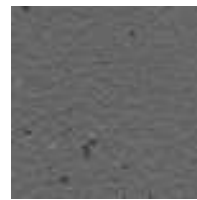
5361



5362



5363



5364



5365



5366



5367



5368

norament® 926 kivo

8

Art. 926 kivo/3166

□ ~1004 mm x 1004 mm

 ~2.7 mm

nora® profile connection dimension: C + U

Resists most oils and greases

Slip resistant R10

Variations in granulate scattering, even within one production batch, define the product's aesthetic character.

**Custom colours are available on request.
Please ask for minimum quantities and delivery times.**







noraplan® product range

noraplan®

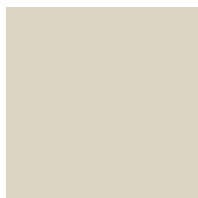
noraplan floor coverings are available as sheet material or tiles, and offer an unlimited scope of design possibilities due to the variety of designs and colours.

noraplan floorings are suitable for heavy-traffic areas. Learn more about the noraplan product portfolio, the technical properties as well as the possible applications.

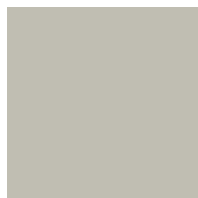


noraplan® uni

One-coloured with a smooth surface.



2446



2454



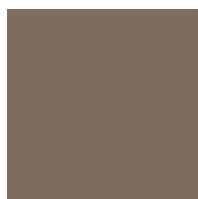
1810



2457



7250



7251



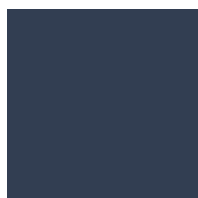
2451



0597



6175



2647



7252



7253



7254



7255



6179



6697

noraplan® uni

16

Art. 1461

~1.22 m x 12.0 m

Art. 2461

~610 mm x 610 mm

15 □ = 5.58 m² in one carton

~2.0 mm

nora® profile connection dimension: A + U

Slip resistant R9

Custom colours and dimensions (e.g. short rolls) are available on request. Please ask for minimum quantities and delivery times.





noraplan® unita

A perfect combination of permanently resilient rubber and randomly dispersed granite chips with a smooth surface. The fine scatter of chips in noraplan unita lends it a discreet appearance. The design is deliberately purist and simple.



red dot design award
winner 2012



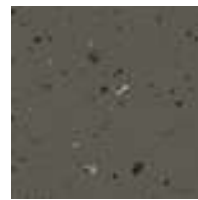
7101



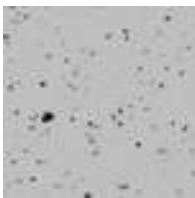
7102



7103



7104



7105



7106



7107



7108



7109



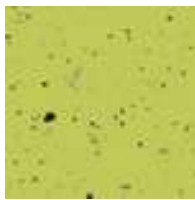
7110



7111



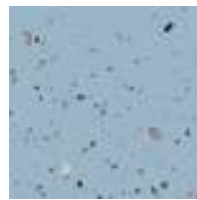
7112



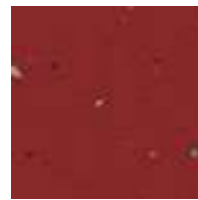
7113



7114



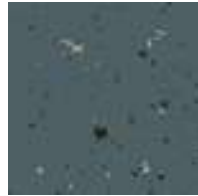
7115



7116



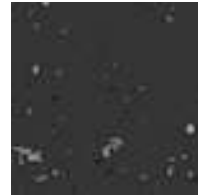
7117



7118



7119



7120

noraplan® unita

 20

Art. 1640

 ~1.22 m x 15.0 m

 ~2.0 mm

nora® profile connection dimension: A + U

Slip resistant R10

Custom colours and dimensions (e.g. short rolls) are available on request.

Please ask for minimum quantities and delivery times.

Please note: Granite is a natural product. For this reason, slight colour deviations may occur in the stone even within the same batch.





noraplan® signa

A changing base colour consisting of three harmoniously matched colour components and characteristic granule inclusions with a smooth or reflection-breaking surface.



7031



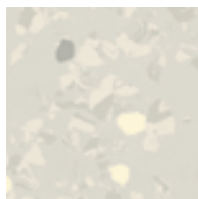
7032



7033



7034



7035



7036



7037



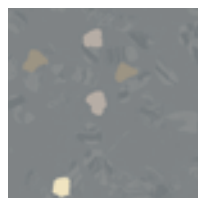
7038



7039



7040



7041



7042



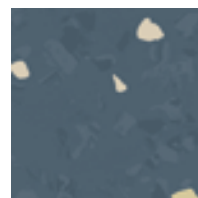
7043



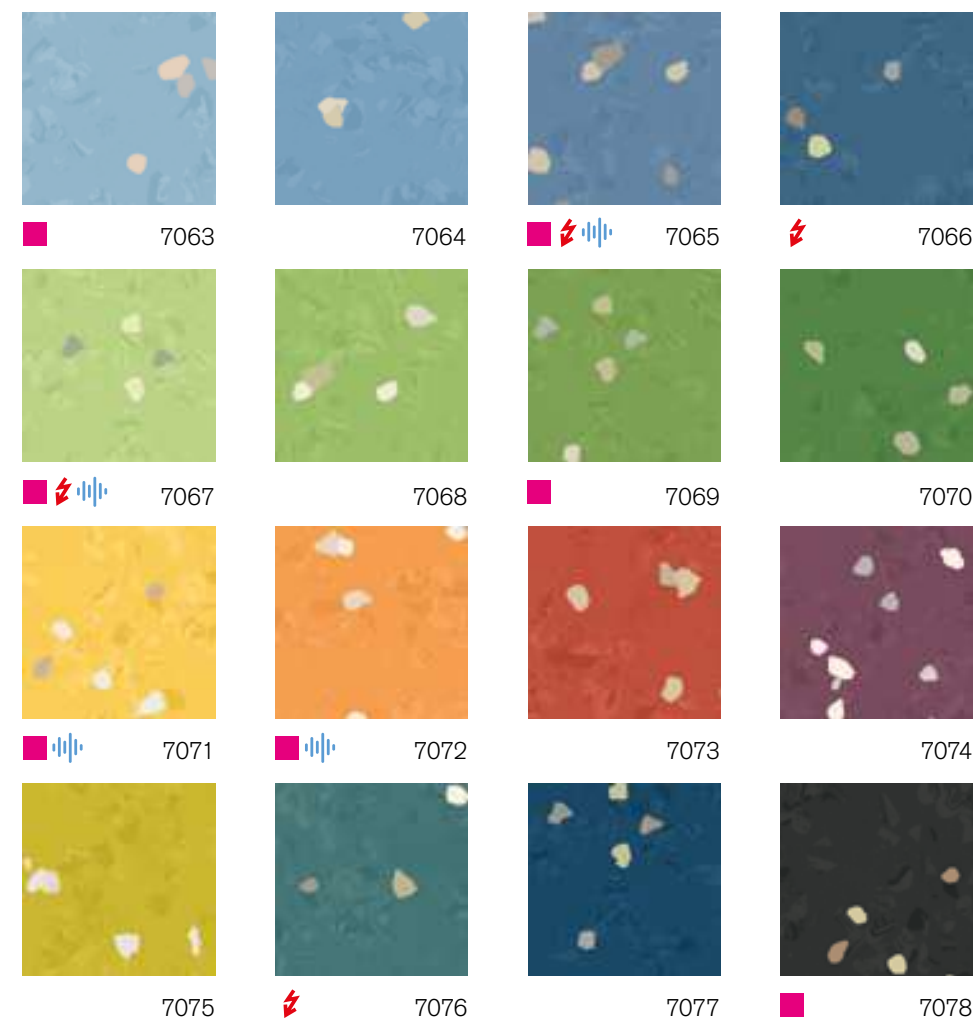
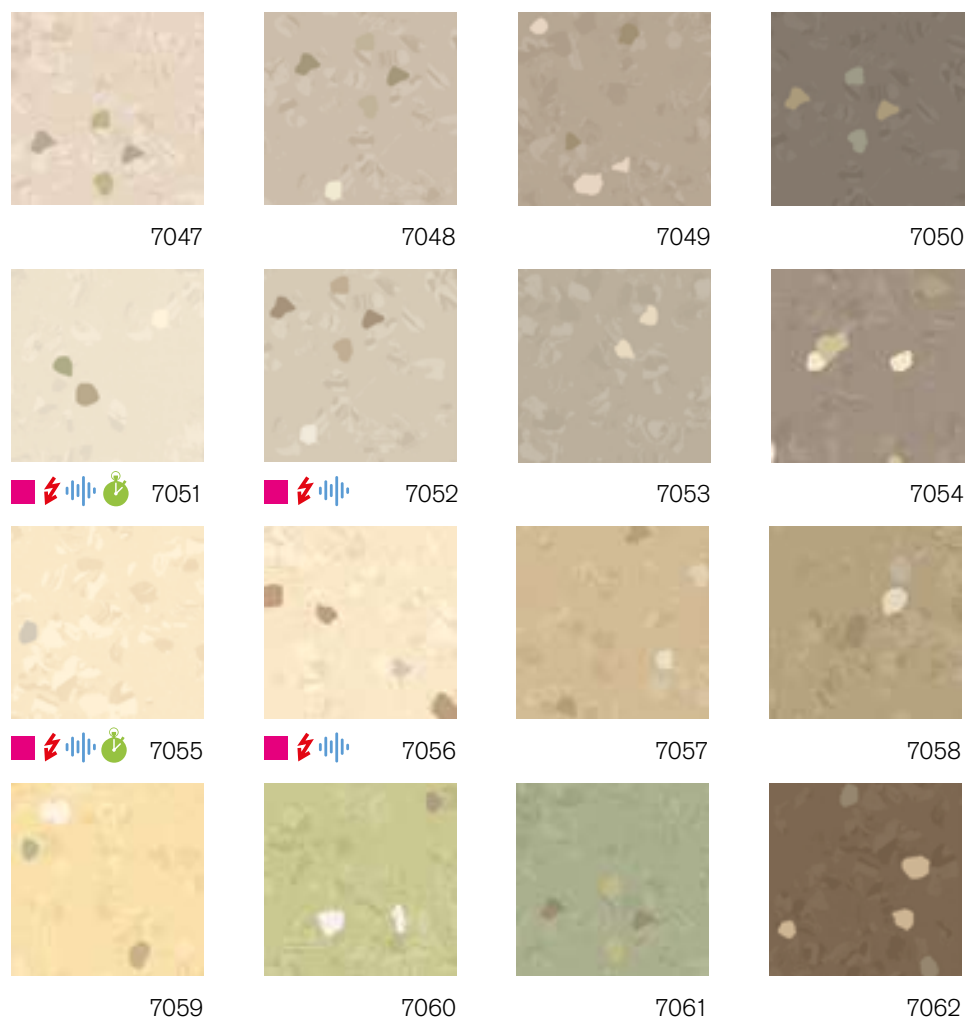
7044



7045



7046



noraplan® signa · smooth surface

noraplan® signa

48

Art. 1462

~1.22 m x 15.0 m

Art. 2462

~610 mm x 610 mm

15 □ = 5.58 m² in one carton



nora® profile connection dimension: A + U

Slip resistant R9

noraplan® signa

17

Art. 1463

~1.22 m x 12.0 m

Art. 2463

~610 mm x 610 mm

10 □ = 3.72 m² in one carton



nora® profile connection dimension: D + U

Slip resistant R9

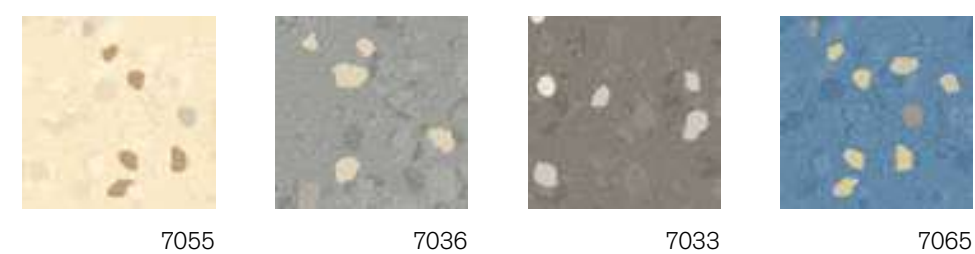
These colours can also be delivered as:

- noraplan® signa ed electrostatically dissipative, page 60
- noraplan® signa acoustic footfall-sound-absorbing 20 dB, page 62
- noraplan® signa nTx self-adhesive, page 82

Additional information on nora® nTx can also be found at www.nora.com/ntx.

Custom colours and dimensions (e.g. short rolls) are available on request. Please ask for minimum quantities and delivery times.

noraplan® signa · reflection-breaking surface



noraplan® signa

4

Art. 1690

~1.22 m x 15.0 m

Art. 2690

~610 mm x 610 mm

15 □ = 5.58 m² in one carton



nora® profile connection dimension: A + U

Slip resistant R10



Hospital Karlsruhe, Germany

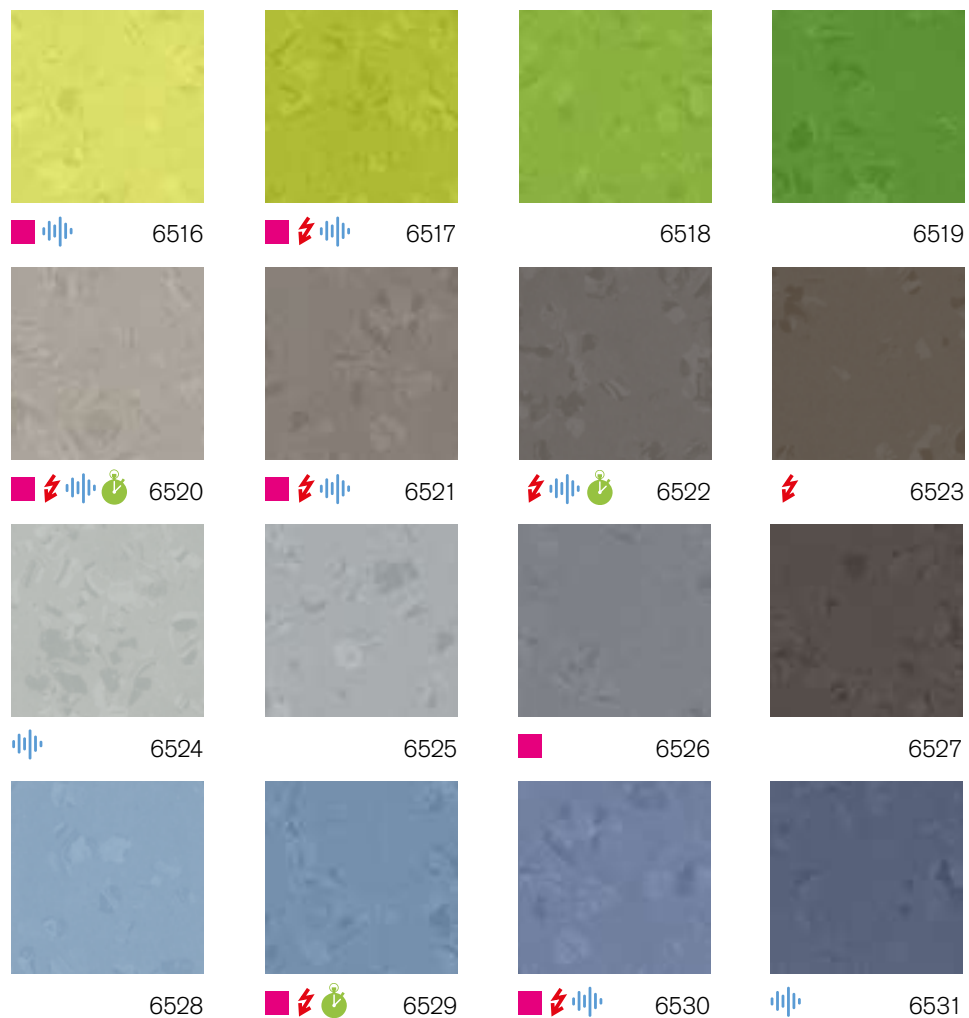
© Elmar Witt



noraplan® sentica

Tone-on-tone design with harmoniously matching colour components and a smooth surface.

6500	6501	6502	6503
6504	6505	6506	6507
6508	6509	6510	6511
6512	6513	6514	6515



noraplan® sentica

38

Art. 1700

~1.22 m x 15.0 m

Art. 2700

~610 mm x 610 mm

15 □ = 5.58 m² in one carton

~2.0 mm

nora® profile connection dimension: A + U

Slip resistant R9

noraplan® sentica

14

Art. 1701

~1.22 m x 12.0 m

Art. 2701

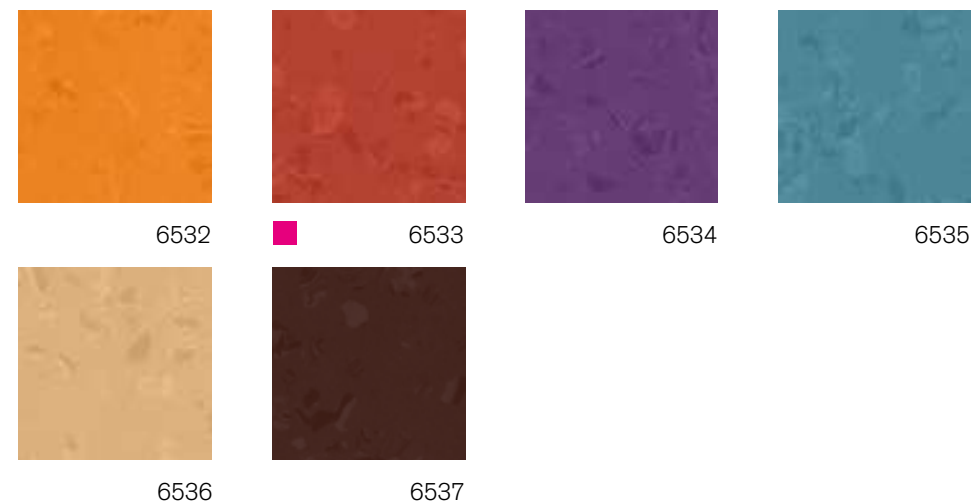
~610 mm x 610 mm

10 □ = 3.72 m² in one carton




~3.0 mm

nora® profile connection dimension: D + U

Slip resistant R9



These colours can also be delivered as:

-  noraplan® sentica ed
electrostatically dissipative, page 61
-  noraplan® sentica acoustic
footfall-sound-absorbing 20 dB, page 63
-  noraplan® sentica nTx
self-adhesive, page 82

Additional information on nora® nTx can also be found at www.nora.com/ntx.

Custom colours and dimensions (e.g. short rolls) are available on request. Please ask for minimum quantities and delivery times.



School Staffeln, Luzern, Switzerland

© Markus Bachmann



noraplan®



noraplan® stone

Discreet, non-directional scatter design available with both reflection-breaking and smooth surfaces.

noraplan® stone · smooth surface



6601



1146



1862



2306



6613



6614



6607



1279

noraplan® stone



Art. 1600

~1.22 m x 15.0 m

Art. 2600

~610 mm x 610 mm

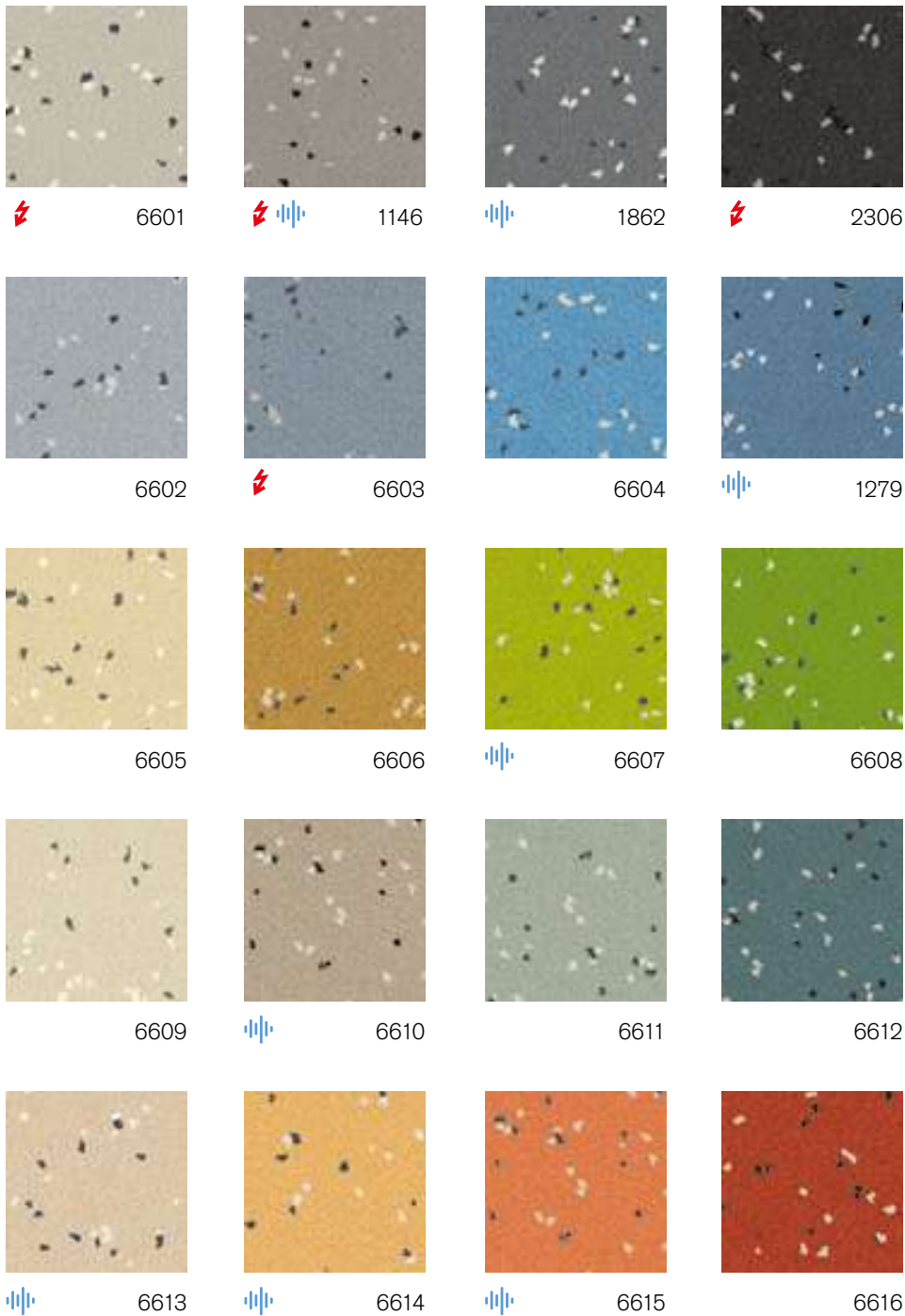
15 □ = 5.58 m² in one carton

~2.0 mm

nora® profile connection dimension: A + U

Slip resistant R9

noraplan® stone · reflection-breaking surface



noraplan® stone

20

Art. 149

~1.22 m x 15.0 m

Art. 249

~610 mm x 610 mm

15 = 5.58 m² in one carton

~2.0 mm

nora® profile connection dimension: A + U

Slip resistant R10

These colours can also be delivered as:

noraplan® stone ed
electrostatically dissipative, page 61

noraplan® stone acoustic
football-sound-absorbing 20 dB, page 63

Also available as noraplan® stone nTx, page 78

**Additional information on nora® nTx can also be found
at www.nora.com/ntx.**

**Custom colours and dimensions (e.g. short rolls) are
available on request.**

Please ask for minimum quantities and delivery times.



noraplan® lona

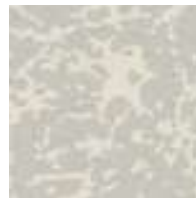
Elegant design with silk-matte, lightly structured surface that adds visual depth to the filigree arrangement of contrasting colours and accents.



6903



6902



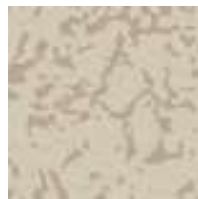
6901



6900



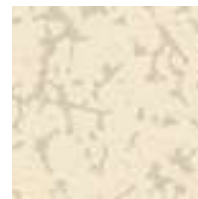
6912



6907



6906



6904



6919



6908



6910



6911



6914



6920



6913



6917

noraplan® lona

16

Art. 166B

~1.22 m x 15.0 m

Art. 266B

~610 mm x 610 mm

15 □ = 5.58 m² in one carton

~2.0 mm

nora® profile connection dimension: A + U

Slip resistant R10

Also available as noraplan® lona nTx, page 78

Additional information on nora® nTx can also be found at www.nora.com/ntx.**Special dimensions (e.g. short rolls) are available on request. Please ask for minimum quantities and delivery times.**

Central Library, Düsseldorf, Germany



noraplan® **valua**

Lively and flowing design with an organic texture in 16 colours inspired by nature and highlighted by a linear surface structure.



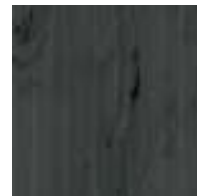
6708



6709



6710



6711



6712



6713



6714



6715



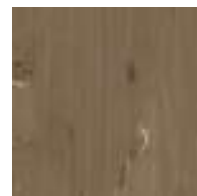
6716



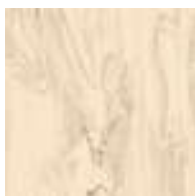
6717



6718



6719



6720



6721



6722



6723



**Art. 174A**

~1.22 m x 15.0 m



nora® profile connection dimension: A + U
Slip resistant R10



Also available as noraplan® valua nTx, page 78

Additional information on nora® nTx can also be found at www.nora.com/ntx.

**Art. 175A**

~1.22 m x 12.0 m



nora® profile connection dimension: D + U
Slip resistant R10

**Custom colours and dimensions (e.g. short rolls) are available on request.
Please ask for minimum quantities and delivery times.**





noraplan® convia

Design with five contrasting granules, with a smooth surface.



7351



7352



7353



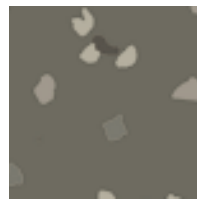
7354



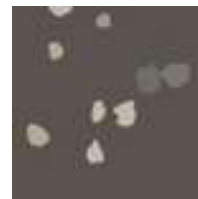
7355



7356



7357



7358



7359



7360



7361



7362



7363



7364



7365



7366



7367



7368



7369



7370



7371



7372



7373



7374



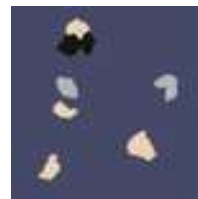
7375



7376



7377

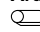


7378

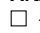
noraplan® convia

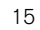
 28

Art. 170F

 ~1.22 m x 15.0 m

Art. 270F


 ~610 mm x 610 mm

15  = 5.58 m² in one carton

 ~2.0 mm

nora® profile connection dimension: A + U

Slip resistant R9

 Also available as noraplan® convia nTx, page 78

Additional information on nora® nTx can also be found at www.nora.com/ntx.

Custom colours and dimensions (e.g. short rolls) are available on request.

Please ask for minimum quantities and delivery times.



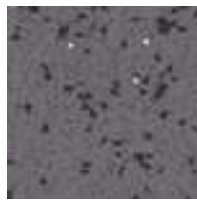


noraplan® ultra grip

Safety floor covering with increased slip resistance, TRRL Pendulum Test 36+ in the wet and RZ value 20.1. Slip resistance R11 according to DIN EN 16165 and DGUV 108-003.



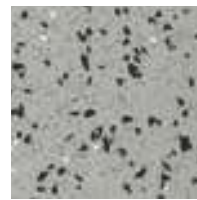
6014



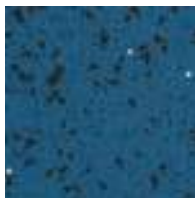
6015



6016



6017



6018



6019



6020



6021



6023



6024



6027




6029

noraplan® ultra grip

Design with discretely dispersed granite chips

 12

Art. 1569

 ~1.20 m x 15.0 m

 ~2.0 mm

nora® profile connection dimension: A + U

Resists most oils and greases

Slip resistant R11

**Custom colours and dimensions (e.g. short rolls) are available on request.
Please ask for minimum quantities and delivery times.**







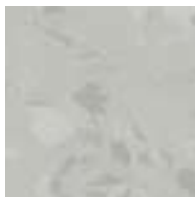
noracare™

noracare is an innovative flooring that offers ecological benefits. Its advanced surface technology allows easy maintenance while providing outstanding resistance against chemicals and disinfectants. noracare is fully recyclable and its extremely low emissions contribute towards excellent indoor air quality. This flooring is available in sheets and is suitable for heavy-traffic areas.



noracare™ seneo

Single-coloured design with iridescent marbled colour granules, which are harmoniously matched to the base colour with minimal contrast. Close up, the 24 colours of the noracare seneo colour palette create a perceptible pattern, while from a distance they appear almost uni-coloured.



7201



7202



7203



7204



7205



7206



7207



7208



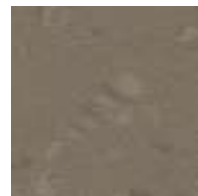
7209



7210



7211



7212

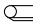




noracare™ seneo

 24

Art. 133E

 ~1.22 m x 15.0 m

 ~2.0 mm

nora® profile connection dimension: A + U

Slip resistant R10

Custom colours and dimensions (e.g. short rolls) are available on request.

Please ask for minimum quantities and delivery times.

New: Certification C2C Gold and Silver.

 **Cradle to Cradle Certified® Gold**

 **Cradle to Cradle Certified® Silver**



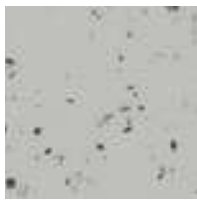
Hospital Dortmund, Germany

© Joachim Grothus



noracare™ uneo

Single-coloured design with randomly scattered granite splinters, with a smooth surface. The harmoniously coordinated colour palette of noracare uneo lends your rooms an unmistakable character.



7001



7002



7003



7004



7005



7006



7007



7008



7009



7010



7011



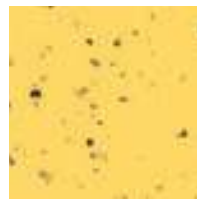
7012



7013



7014



7015



7016



7017



7018



7019



7020



7021

noracare™ uneo

21

Art. 140D

~1.22 m x 15.0 m

~2.0 mm

nora® profile connection dimension: A + U

Slip resistant R10

Custom colours and dimensions (e.g. short rolls) are available on request. Please ask for minimum quantities and delivery times.

New: Certification C2C Gold and Silver.

 **Cradle to Cradle Certified® Gold**

 **Cradle to Cradle Certified® Silver**







nora® special floorings

We have developed our special floorings for areas subject to special technical standards and requirements. These include e.g. acoustic coverings with an impact sound improvement index of 20 dB, electrostatically dissipative or conductive qualities, or highly specialised solutions for ice rinks, golf facilities, and many more. Get to know the range of designs and variants on the following pages.

norament® 992/992 grano

For areas with extreme requirements
(e.g. ice rinks, golf clubs, animal stables, etc.).

norament 992 contains at least 11 % post-production recycled content.



norament® 992 · round pastille



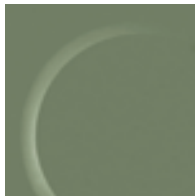
0882



5337



0749



2070



0319



0702

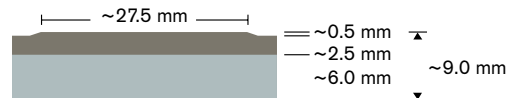
norament® 992



6

Art. 992/1956

□ ~1002 mm x 1002 mm



nora® profile connection dimension: N

Slip resistant R9

Custom colours are available on request.

Please ask for minimum quantities and delivery times.



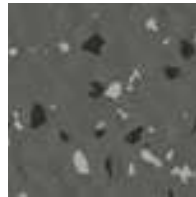
norament® 992 grano · hammerblow surface



5302



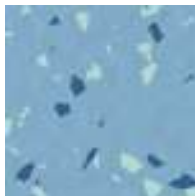
5303



5304



5308



5317



5319

norament® 992 grano



6

Art. 992 grano/1955

□ ~1002 mm x 1002 mm nora® profile connection dimension: N

Slip resistant R9



**Custom colours are available on request.
Please ask for minimum quantities and delivery times.**



SAP-Arena, Mannheim, Germany

norament® and noraplan® ec ⚡



Electrostatically conductive “ec” floorings for optimum ESD protection of electronic devices and equipment. Suitable for areas with a risk of explosions.

norament® 927 grano ec



4617

norament® 927 grano ec



Art. 927 grano ec/1880

□ ~1004 mm x 1004 mm



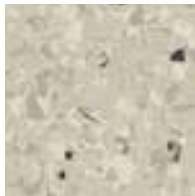
~3.5 mm

nora® profile connection dimension: E + U

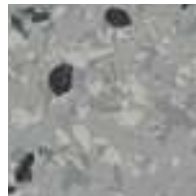
Slip resistant R10

Suitable for fork-lift-truck areas.
Largely resistant to acids and alkalis.

noraplan® astro ec



6102



6007



6114



6056

noraplan® astro ec



Art. 166C

⊞ ~1.22 m x 12.0 m

Art. 266C

□ ~610 mm x 610 mm

15 □ = 5.58 m² in one carton



~2.0 mm

nora® profile connection dimension: A + U

Slip resistant R9

Special dimensions (e.g. short rolls) are available on request.
Please ask for minimum quantities and delivery times.

norament® ed ⚡



Electrostatically dissipative “ed” floorings for optimum ESD protection of electronic devices, equipment and people. Protect against electrical shock, resist most oils and greases and are suitable for forklift truck areas.

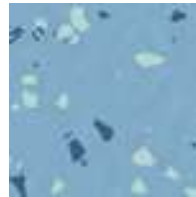
norament® 928 grano ed



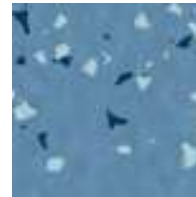
5301



5306



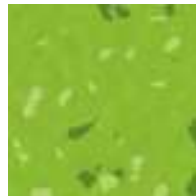
5317



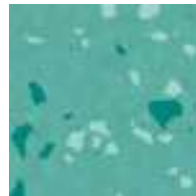
5318



5329



5325



5321



5304

norament® 928 grano ed



Art. 928 grano ed/1880

□ ~1002 mm x 1002 mm



~3.5 mm

nora® profile connection dimension: E + U
Slip resistant R10

norament® 928 grano ed



Art. 928 grano ed/1911

□ ~610 mm x 610 mm



~3.5 mm

nora® profile connection dimension: E + U
Slip resistant R10

Custom colours are available on request.

Please ask for minimum quantities and delivery times.

Quick-Installation of nora® ESD floorings

nora ESD floorings can be installed with the unique dry adhesive nora dryfix ed. It accelerates the installation with a high reliability and reduces downtimes significantly. More information can be found on page 84.

noraplan® ed ⚡



Electrostatically dissipative “ed” floorings for optimum ESD protection of electronic devices, equipment and people. Protect against electrical shock, resist most oils and greases.

noraplan® signa ed



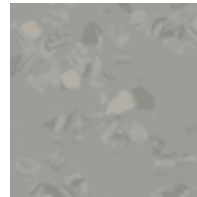
7031



7033



7035



7036



7044



7045



7051



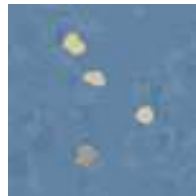
7052



7055



7056



7065



7066



7067



7076

noraplan® signa ed



Art. 1390

~1.22 m x 15.0 m

Art. 2390

~610 mm x 610 mm

15 □ = 5.58 m² in one carton



nora® profile connection dimension: A + U

Slip resistant R9

noraplan® signa ed



Art. 1523

~1.22 m x 12.0 m



nora® profile connection dimension: D + U

Slip resistant R9

noraplan® sentica ed



6520



6521



6522



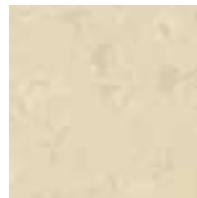
6523



6508



6509



6504



6505



6517



6513



6529



6530

noraplan® sentica ed



Art. 1702

~1.22 m x 15.0 m

Art. 2702

~610 mm x 610 mm

15 □ = 5.58 m² in one carton



nora® profile connection dimension: A + U

Slip resistant R9

noraplan® sentica ed



Art. 1703

~1.22 m x 12.0 m



nora® profile connection dimension: D + U

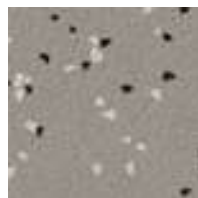
Slip resistant R9

Please note: The colours 6504, 6505 and 6508 are only recommended for areas with a low incidence of stains and dirt (e.g. **not** for OP theatres or intensively frequented areas).

noraplan® stone ed · reflection-breaking surface



6601



1146



2306



6603

noraplan® stone ed



Art. 129

~1.22 m x 15.0 m

Art. 229

~610 mm x 610 mm

15 □ = 5.58 m² in one carton



nora® profile connection dimension: A + U

Slip resistant R10

Please note:

All noraplan® ed floorings must be sealed with nora® joint-sealing compound.

Custom colours and dimensions (e.g. short rolls) are available on request.

Please ask for minimum quantities and delivery times.

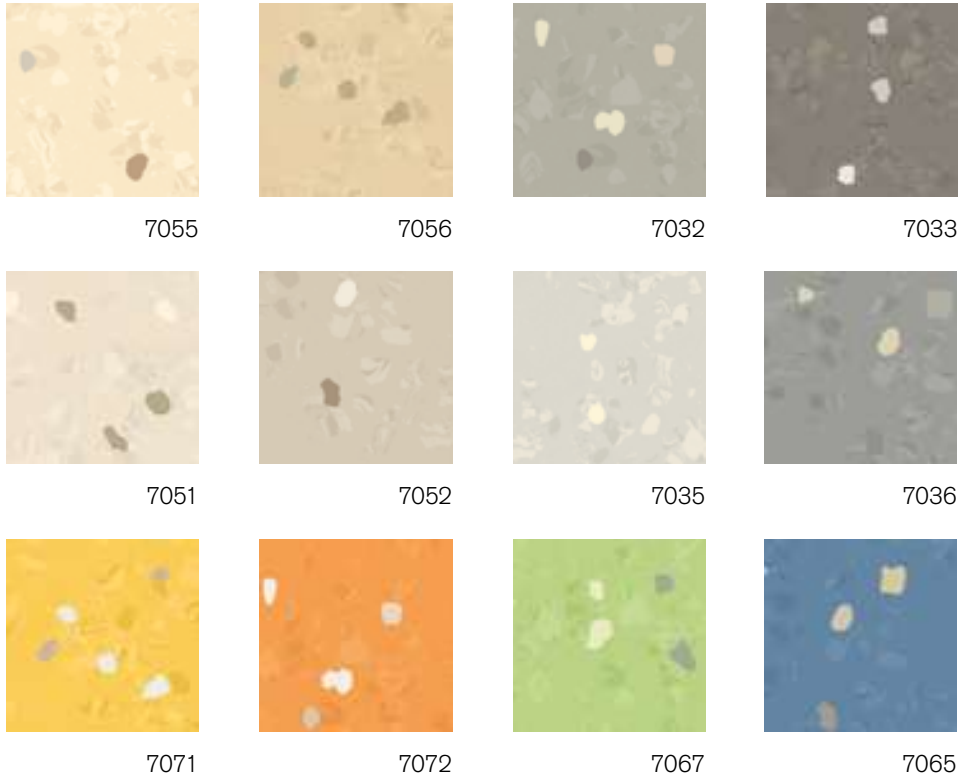
noraplan® acoustic

For high footfall sound absorption with a footfall sound absorption improvement of 20 dB.

noraplan acoustic contains 29% post-production recycled content.



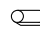
noraplan® signa acoustic



noraplan® signa acoustic

 12

Art. 1420

 ~ 1.22 m x 12.0 m



nora® profile connection dimension: F + U
Slip resistant R9

Please note:

All noraplan® acoustic floorings must be sealed with nora® hot welding rod.

Custom colours and dimensions (e.g. short rolls) are available on request.

Please ask for minimum quantities and delivery times.

noraplan® sentica acoustic



6524



6520



6521



6522



6508



6513



6505



6510



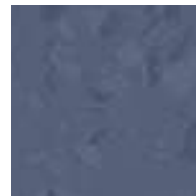
6516



6517



6530



6531

noraplan® sentica acoustic

12

Art. 1705

~1.22 m x 12.0 m



nora® profile connection dimension: F + U

Slip resistant R9

noraplan® stone acoustic · reflection-breaking surface



6613



6610



1146



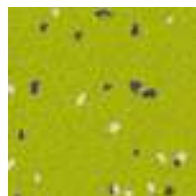
1862



6614



6615



6607



1279

noraplan® stone acoustic

8

Art. 148

~1.22 m x 12.0 m



nora® profile connection dimension: F + U

Slip resistant R10





nora® stairwell solutions

nora® stairwell solutions

Individual requirements for stairwells are best fulfilled by our extensive system programme, from the tailored norament stairtread with integrated pre-shaped stair nosing, riser, and tread to individual combinations of stair angles, stair nosings, and integrated safety stripes.

Our system range is rounded off with colour-matched skirting solutions, joint-sealing compounds, hot welding rods, and installation materials.

norament® stairtreads

Pre-shaped stair coverings consisting of stair nosing, riser and tread all in one piece for straight steps with right-angled edge. For extremely heavy-traffic stairwell areas. Improves footfall sound absorption by 12 dB.

Stairtread norament® 926

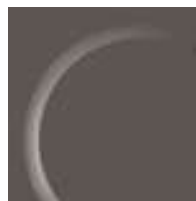
One-coloured with classic round pastille.



5336



5337



0749



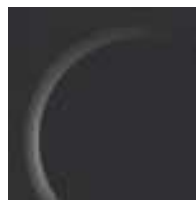
0702



0007



0884



0716



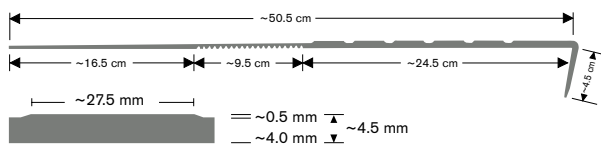
0319



0733



5343



Stairtread norament® 926

10

Art. 926/465 – width 1 285 mm

Art. 926/466 – width 1 614 mm

Art. 926/467 – width 2 004 mm



Stairtread norament® 926 grano

Granular design rich in contrast with a hammerblow surface.



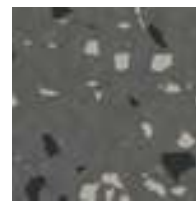
5301



5302



5303



5304



5313



5314



5315



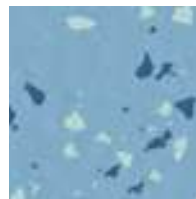
5308



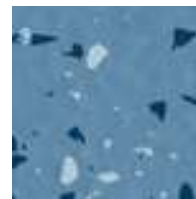
5329



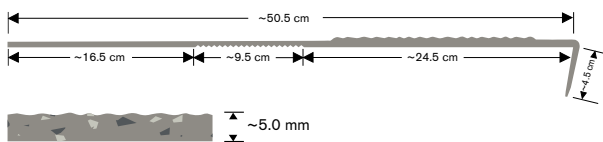
5325



5317



5318



Stairtread norament® 926 grano

12

Art. 926 grano/479 – width 1 285 mm

Art. 926 grano/468 – width 1 614 mm

Art. 926 grano/469 – width 2 004 mm

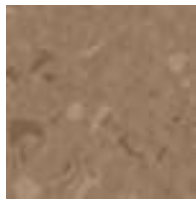


Stairtread norament® 926 satura

Tone-in-tone granular design with a hammerblow surface.



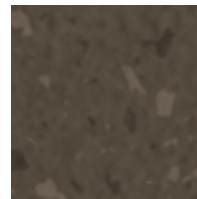
5102



5103



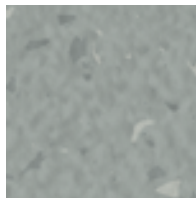
5107



5108



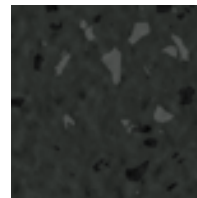
5110



5114



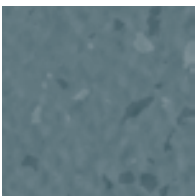
5115



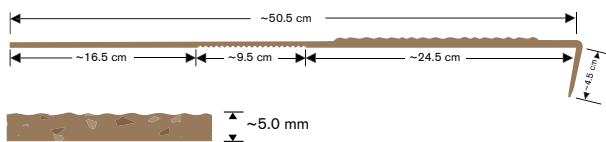
5116



5121



5127



Stairtread norament® 926 satura

10

Art. 926 satura/479 – width 1 285 mm

Art. 926 satura/468 – width 1 614 mm

Art. 926 satura/469 – width 2 004 mm



Stairtread norament® 926 arago

Flat, direction-oriented relief structure with fine grain design and modern marbling.



5171



5172



5175



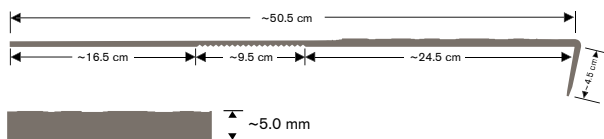
5177



5178



5179



Stairtread norament® 926 arago

6

Art. 926 arago/3170 – width 1 285 mm

Art. 926 arago/3171 – width 1 614 mm

Art. 926 arago/3172 – width 2 004 mm

Variations in colour and design, even within one production batch, define the product's aesthetic character.



norament® stairtreads with signal or safety stripes

norament® stairtreads can be additionally equipped with the following signal or safety stripes:



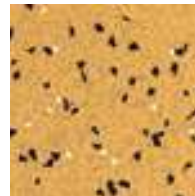
0122



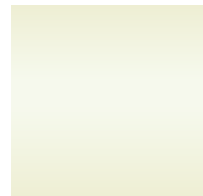
0895



6014



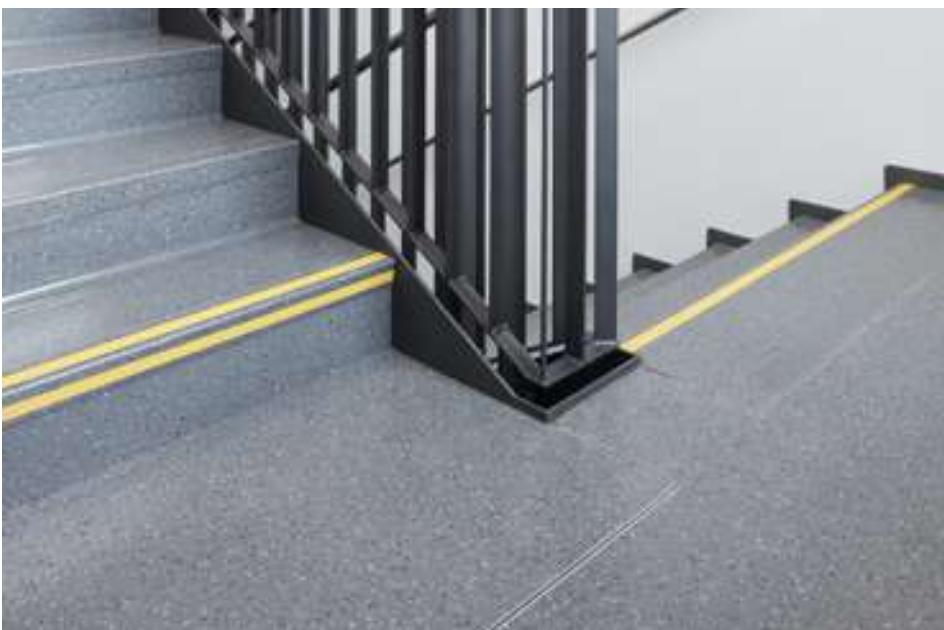
6029



phosphorescent

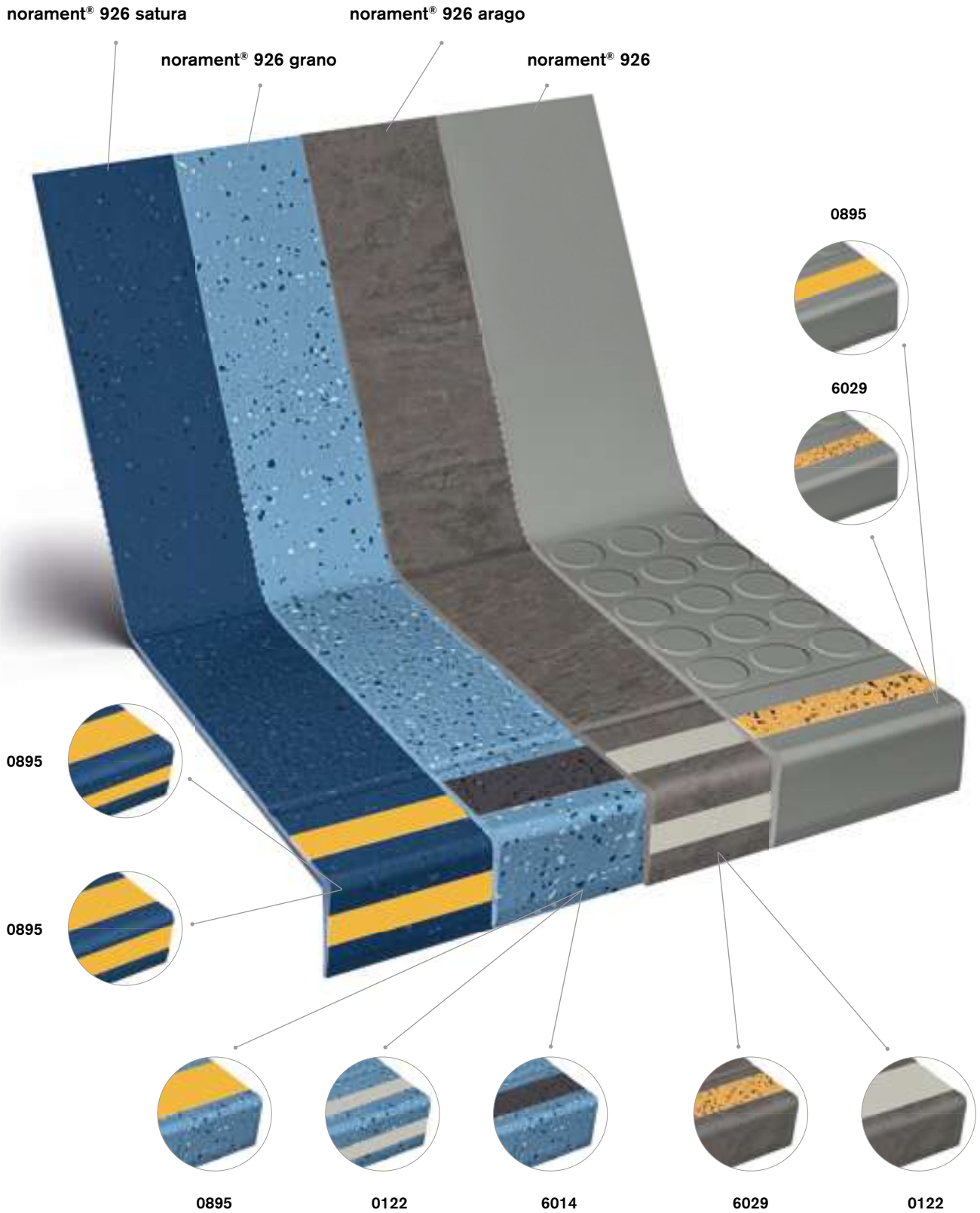
- Signal stripes uni, in widths of 2, 3, 4 or 5 cm (5 cm only available for stairtread norament® 926 arago or for stairtreads with hammerblow surface) in the colours 0122 light grey and 0895 signal yellow, integrated into the tread area. Also available in widths of 2 or 3 cm set into the vertical part of the stair nosing.
- Safety stripes ultra grip for increased slip resistance in widths of 2, 3, 4 or 5 cm (5 cm only available for stairtread norament® 926 arago or for stairtreads with hammerblow surface) in the colours 6029 yellow and 6014 grey, integrated into the tread area. Also available in widths of 2 or 3 cm set into the vertical part of the stair nosing.
- Signal stripes, yellow, phosphorescent in accordance with DIN 67510, in a width of 2 cm, integrated into the tread area of the stair nosing.

Signal and safety stripes in other widths and colours are available on request. Please ask for minimum quantities and delivery times.



Most frequently used stripe combinations

Further options are available.




nora® stair accessories

The nora accessory range is made of rubber matched to suit the respective nora floor coverings. They can also be used in combination with other types of flooring. nora profiles are impact and shock resistant and do not shrink. They contain no phthalate plasticisers and retain their functional reliability for many years.

nora® stair nosings

With plug-in lip for quick and easy installation on all types of staircases.

1 T 5049 2 T 5044
 8

Delivery in 5 fixed lengths possible:
 1.00/1.25/1.65/2.0/2.50 m

0702	0749	5301	5310
0716	0884	5305	6179

Custom colours are available with a minimum order quantity of 300 m without surcharge. Please contact us for further information.

3 TA 1203

Colour: Aluminium silver anodised
 Aluminium stair nosing for stairs made from norament® coverings
 Delivery unit: 2.7 m

nora® stair angles

For the smooth finishing of right-angled stairs to the wall and banister side.

4 TW 7005 U 5 TW 7006 U
 6 TG 7003 U 7 TG 7004 U
 32

Delivery unit: pieces

0007	0733	2786	5110	5121	5303	5315	5329
0319	0749	5103	5114	5127	5304	5317	5343
0702	0882	5107	5115	5301	5313	5318	6507
0716	0884	5108	5116	5302	5314	5325	6522

nora® skirting and stringer profile

8 S 1008 U

 32

Multi-purpose skirting
 Delivery unit: rolls of 10 m
 Connection profile for nora® stair angles "TW"

9 A 5013 U

 32

For landings and ramps
 Delivery unit: 2.5 m
 Connection profile for nora® stair angles "TG"

nora® stair margin

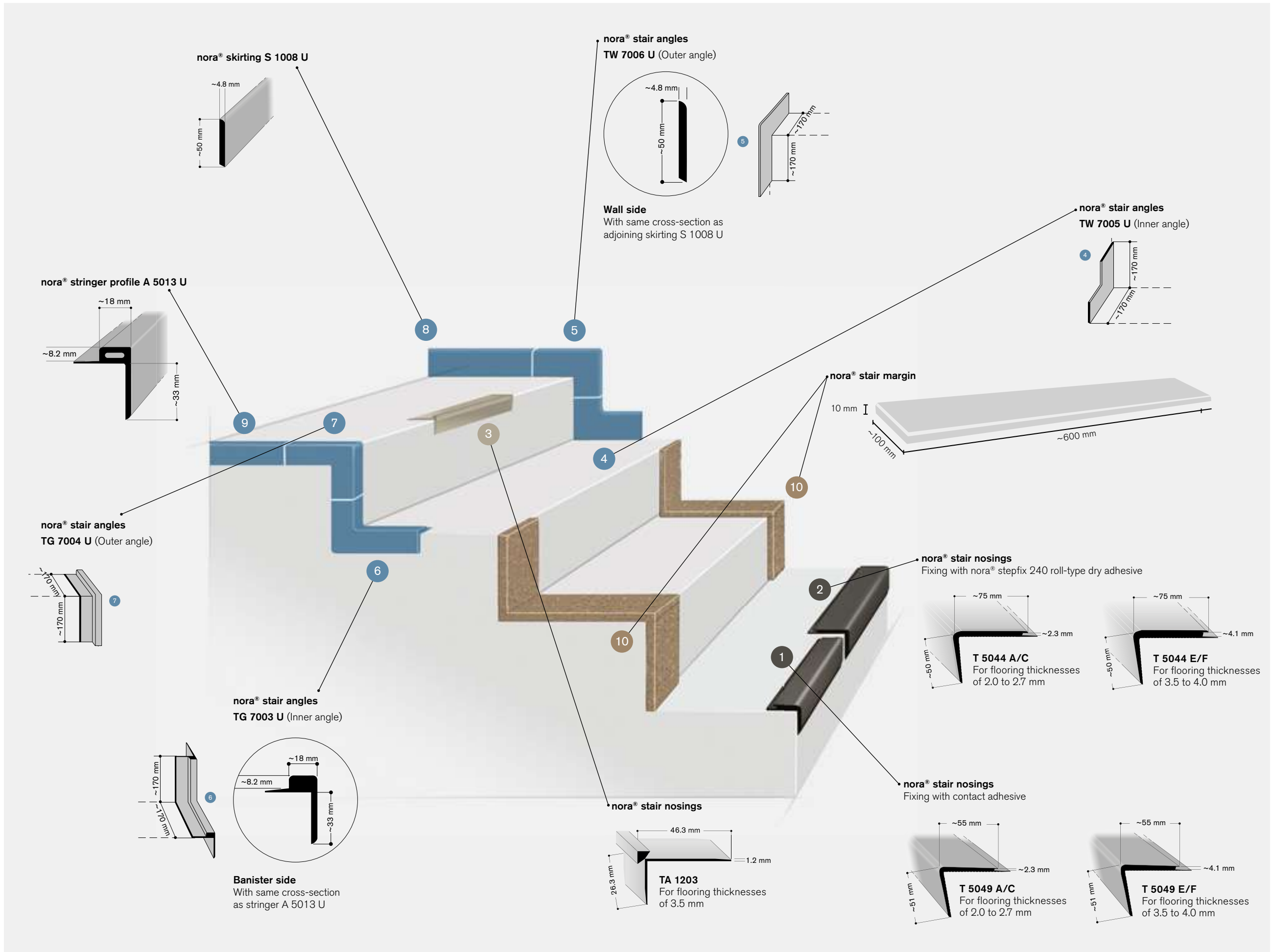
10

 2

For wall and banister side. Hammerblow surface with granular design.

Art. 819
 ~600 mm x 100 mm
 Thickness 10 mm
 Supplied as: pieces

5304	5315
------	------



nora® stepfix 240

Special roll-type dry adhesive

For quick installation of norament® stairtreads, stairwell installations with nora® stair nosing T 5044 and nora® stair margin.

A cost-effective innovation in adhesives. Suitable for new builds and renovation projects. Advantages: 3-5 times faster to install, odourless, can be walked on immediately, economical and reliable thanks to excellent bonding performance.

Art. 907

Delivery unit: 1 roll of 50 m in one carton

nora® special range for stairwell areas

The special range offers profiles with different cross-sections for further applications. The profiles shown here are examples only. Further individual designs are available on request. Delivery units and minimum order quantities on request.

nora® stair nosings

T 5019/T 5033/T 5045/T 5005

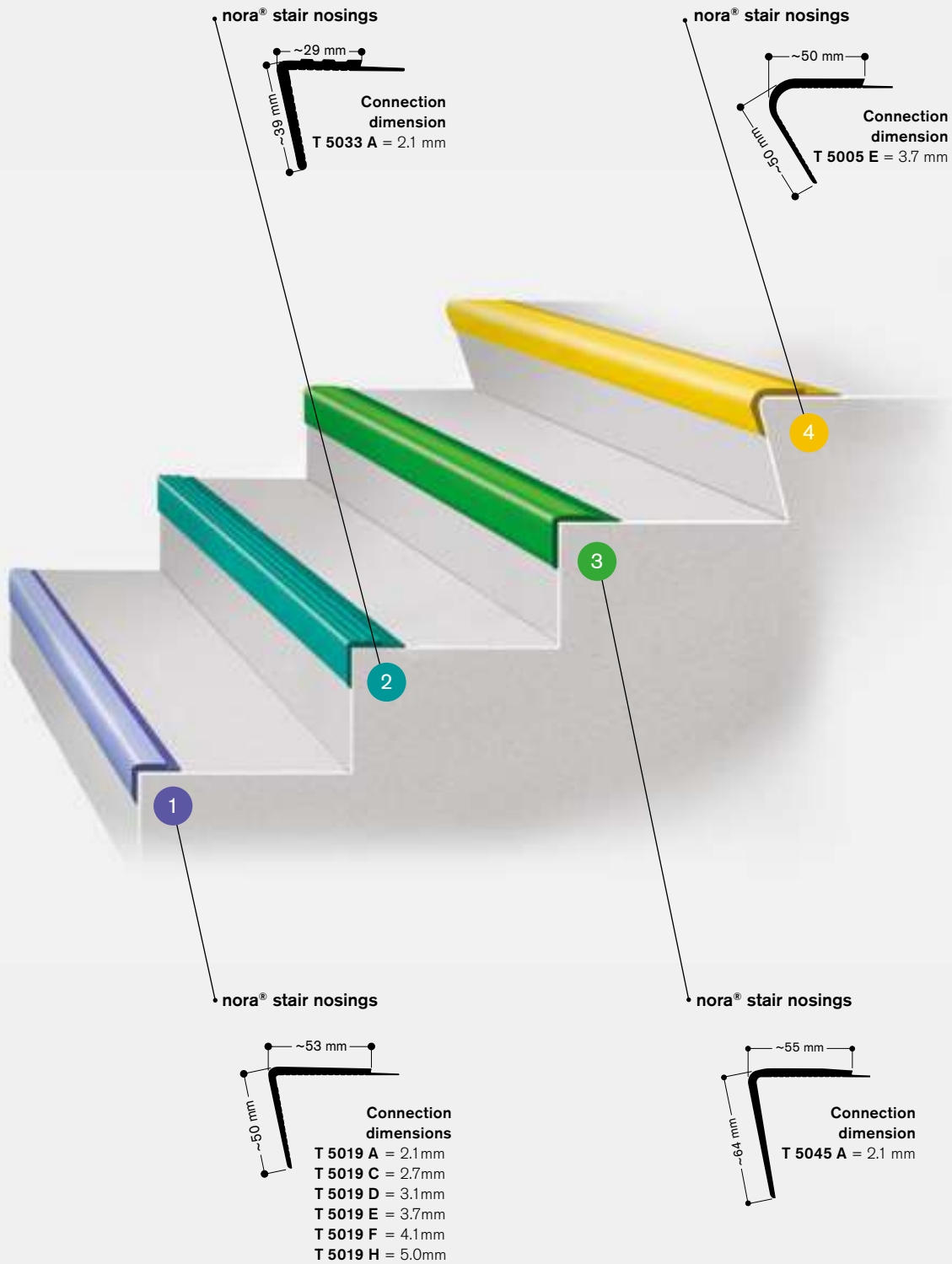


nora stepfix



nora® stair accessories

nora® special range



Removable Floor Coverings: norament® 975 LL

This removable rubber floor covering can be quickly installed using a suitable tackifier and can be used as soon as it has been laid. It can also be removed and reused, which allows flexible use in a range of applications. It is suitable for new and renovated buildings as well as raised-access floors, modular or temporary flooring and installation on existing old coverings.

norament 975 LL contains 8 % post-production recycled content.



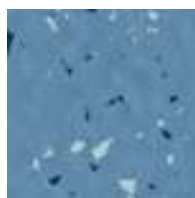
norament® 975 LL · grano design Hammerblow surface



5303



5304



5318



5302



5306



5329

norament® 975 LL



Art. 975 LL/1880

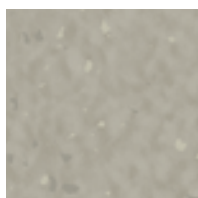
□ ~1000 mm x 1000 mm



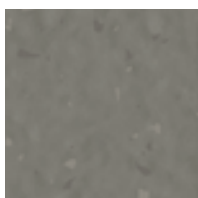
nora® profile connection dimension: E + U

Slip resistant R9

norament® 975 LL · satura design Hammerblow surface



5110



5111



5116

norament® 975 LL



Art. 975 LL/1880

□ ~1000 mm x 1000 mm



nora® profile connection dimension: E + U

Slip resistant R9

The differences between the design of norament 975 LL and the standard product norament 926 are production-related. Please request individual colour samples of the required norament product.

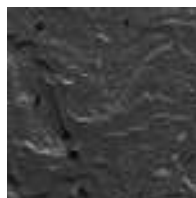
norament® 975 LL · serra design Relief structure



4930



4821



4929

norament® 975 LL



Art. 975 LL/3027

□ ~1000 mm x 1000 mm



nora® profile connection dimension: E + U
Slip resistant R10

norament® 975 LL · kivo inspired design Two-tone surface



5263



5264



5265

norament® 975 LL



Art. 975 LL/3208

□ ~1000 mm x 1000 mm



nora® profile connection dimension: E + U
Slip resistant R10

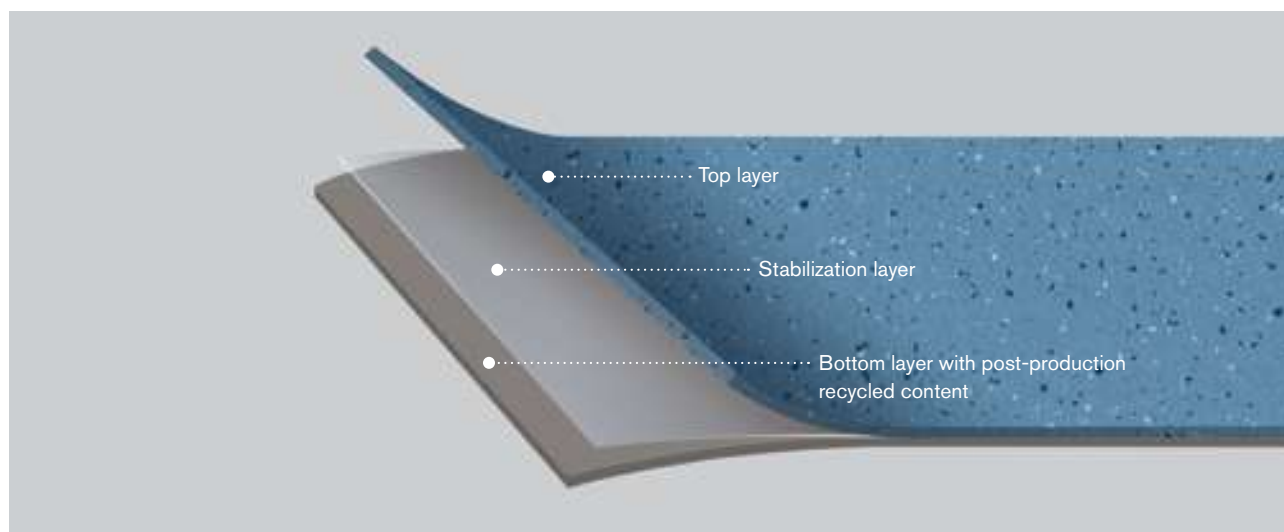
As a genre loose laid flooring may not be the best solution under certain conditions.

We are happy to advise you if the floor in your room is subject to:

- High or regular exposure to moisture
- High or frequently occurring dynamic pressure loads (e.g. using forklifts)
- High temperature fluctuations

Custom colours of all norament 975 LL designs are available on request. Please ask for minimum quantities and delivery times.

Product Structure

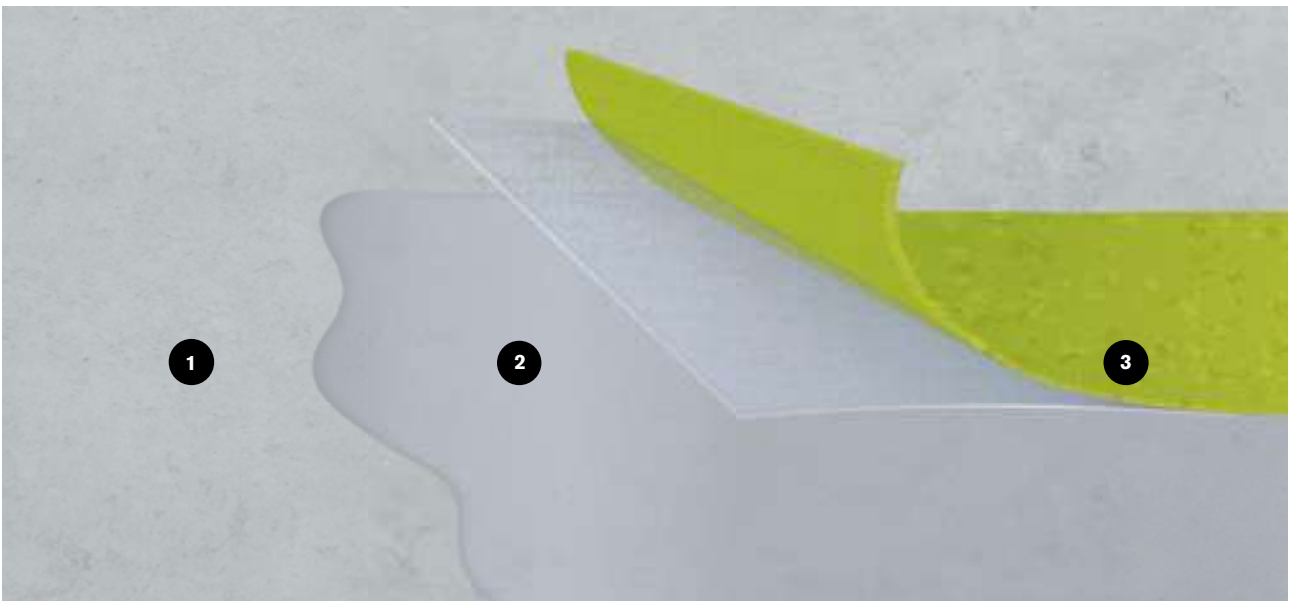


Quick installation systems

nora® nTx

nora nTx is a unique technology for the professional installation of nora rubber floor coverings. Ingeniously simple – nora nTx brings its adhesive strength along from the factory. The flooring is cleanly and safely installed in only a few steps and immediately ready for use. And this can be done on the concrete or cement screed subfloors typical in new construction, as well as over other existing floor coverings. Even high residual moisture in the subfloor is not a problem for nora nTx.

nora also offers a range of tools and installation material to ensure clean and safe substrate preparation (see page 83).



1 Subfloor 2 nora® nTx 020 (primer) 3 nora® nTx floor covering with self-adhesive back



nora® nTx consists of noraplan® and norament® standard floor coverings, which are equipped with an adhesive backing.

In addition to the products and colours shown on the following pages you can also order other norament or noraplan floor coverings as nora nTx coverings subject to minimum quantities.



nora nTx standard colour



available as nora nTx with minimum order quantity

The advantages at a glance



Reliable installation result

nora nTx reduces installation problems: no bubbles, no residual indentations, no seams. Everything from a single source: 10-year-warranty.



Immediate usability

Avoid drying and waiting times. Installation is possible during ongoing operations, and the floor can be used immediately after installation.



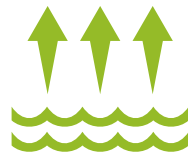
High efficiency

The preparation of the floor and the installation of nora nTx require only a few work steps – for more space in less time.



For all types of subfloors

nora nTx is suitable for all common types of subfloors – ideal also for problematic subfloors and underfloor heating.



Use with residual moisture

Application in new builds also possible with increased residual moisture in the subfloor.



Covering-over-covering installation

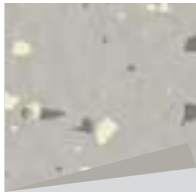
In the case of renovations, installation is possible directly over existing floor coverings in just a few steps.



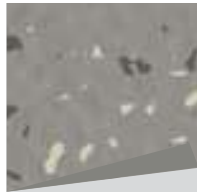
norament® 926 grano nTx · hammerblow surface



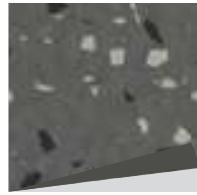
5301



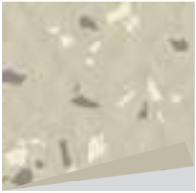
5302



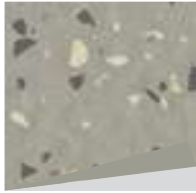
5303



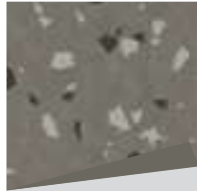
5304



5305



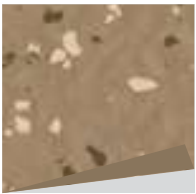
5306



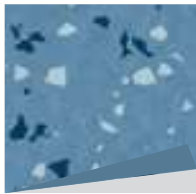
5307



5308



5315



5318



5319



5320



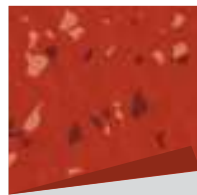
5325



5329



5331



5332

Art. 3111

□ ~1004 mm x 1004 mm



~3.6 mm

nora® profile connection dimension: E + U

Slip resistant R9

Custom colours are available on request.
Please ask for minimum quantities and delivery times.

norament® 926 grano nTx · cubic structure



5304

Art. 3127

□ ~1004 mm x 1004 mm



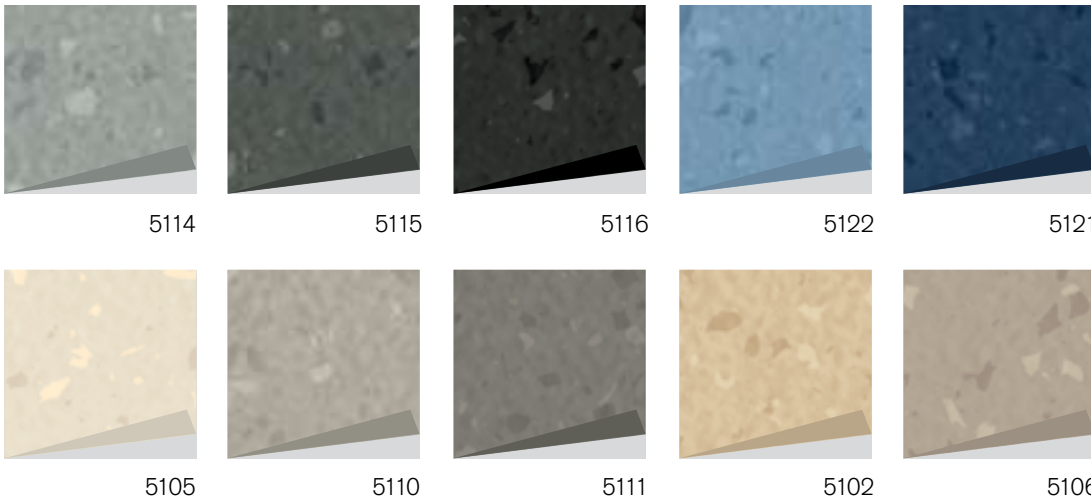
~3.6 mm

nora® profile connection dimension: E + U

Slip resistant R10

Custom colours are available on request.
Please ask for minimum quantities and delivery times.

norament® 926 satura nTx · hammerblow surface



Art. 3111

□ ~1004 mm x 1004 mm



nora® profile connection dimension: E + U

Slip resistant R9

**Custom colours are available on request.
Please ask for minimum quantities and
delivery times.**

norament® 926 arago nTx · relief structure



Art. 3122

□ ~1004 mm x 502 mm



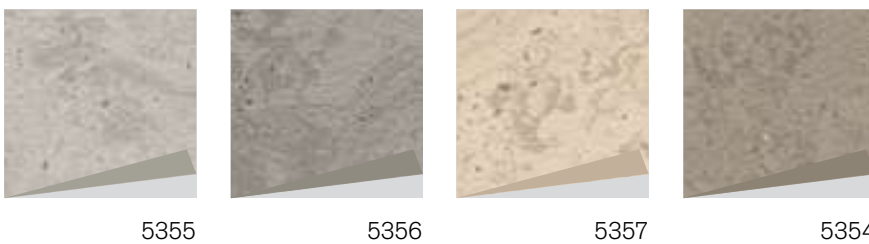
nora® profile connection dimension: E + U

Slip resistant R10

We also supply tiles with chamfered edges on request (Art. 3123)

**Custom colours are available on request.
Please ask for minimum quantities and
delivery times.**

norament® 926 castello nTx · two-tone surface



Art. 3177

□ ~1004 mm x 1004 mm



nora® profile connection dimension: E + U

Slip resistant R10

**Custom colours are available on request.
Please ask for minimum quantities and
delivery times.**

noraplan® sentica nTx · smooth surface



6505



6520



6506



6522



6529

Art. 182C

~1,22 m x 15,0 m

~2.1 mm

nora® profile connection dimension: A + U

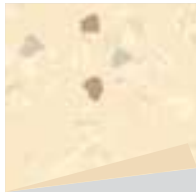
Slip resistant R9

Custom colours and dimensions (e.g. short rolls) are available on request.
Please ask for minimum quantities and delivery times.

noraplan® signa nTx · smooth surface



7051



7055



7031



7036



7033

Art. 181C

~1,22 m x 15,0 m

~2.1 mm

nora® profile connection dimension: A + U

Slip resistant R9

Custom colours and dimensions (e.g. short rolls) are available on request.
Please ask for minimum quantities and delivery times.

With nora nTx you can **reduce installation time by up to 50%** and can even **carry out renovations during ongoing operations**.

Installation problems like bubbles, residual indentations, or seams **belong to the past**.



nora® nTx installation material

nora nTx 020 has been developed specifically for nora® nTx floor coverings. The perfect matching between the primer and the nora nTx floor coverings provides functional reliability and ensures the highest standards of quality. Moreover, nora nTx 020 can be applied to subfloors with higher residual moisture levels.

nora® nTx 020
1C primer (Bonding agent)

Art. 6684
Primer for improved adhesion
Available as 12 kg container

nora® nTx tools

nora® nTx sanding disc incl. nTx K3
Sanding disc for preparing substrates

Art. 6685
Suitable sanding discs for the machines: Mambo, Columbus, and Orkan. Already fitted with sanding tool nTx K3.
Note: Please specify the machine type in your order

nora® nTx K3
Sanding tool (fine)

Art. 6686
Sanding tool for nTx sanding disc

nora® nTx K2
Sanding tool (coarse)

Art. 6687
Sanding tool for nTx sanding disc



Sanding disc



Sanding tools

Quick installation systems nora® dry adhesives

nora® dry adhesive tapes are suitable for the permanent fixing of nora floor coverings or for the quick installation of norament stairtreads, further stairwell solutions and nora skirtings.

nora dryfix™ 750 Dry adhesive supplied in rolls

For the permanent fixing of nora floor coverings. Suitable for new builds and renovations.

Advantages: 5 times as quick, can be walked on immediately, odourless, economic, low-emission and reliable.

Art. 6556

Delivery unit: 1 roll of 30 m in one carton
(tape width 750 mm)

nora® stepfix 240 Dry adhesive supplied in rolls

For quick installation of norament stairtreads, stairwell installations with nora stair nosing T 5044 and nora® stair margin.

Art. 907

Delivery unit: 1 roll of 50 m in one carton
(tape width 240 mm)

nora dryfix™ ed Conductive dry adhesive supplied in rolls

For the permanent fixing of electrostatically dissipative or conductive nora floor coverings. Suitable for new builds, renovations and on top of existing floor coverings.

Advantages: 5 times as quick, can be walked on immediately, odourless, economic, low-emission and reliable.

Art. 6706

Delivery unit: 1 roll of 30 m in one carton
(tape width 750 mm)

nora® profix · Dry adhesive tapes

nora® profix 50

For quick installation of skirting S 1023 U.

Art. 992

Delivery unit: 4 rolls of 50 m in one carton
(tape width 50 mm)

nora® profix 90

For quick installation of skirtings S 1024 U, S 3003 as well as for pedestal formation through wall nosings (cushioned-edge profile).

Art. 993

Delivery unit: 2 rolls of 50 m in one carton
(tape width 90 mm)



nora dryfix 750 and nora dryfix ed



nora profix

Installation materials

nora® wet adhesives

High quality adhesives for the installation of nora rubber flooring.
High dimensional stability and odorless during and after the application.

nora® AC 100

Acrylic adhesive

High-quality, highly shear-resistant interior wet-bed dispersion adhesive for the installation of nora rubber flooring.

Art. 6694

Delivery unit: bucket of 14 kg



nora® PU 102

2-component polyurethane adhesive

High-quality 2-component polyurethane adhesive for gluing predominantly norament coverings.

Art. 6696

Delivery unit: bucket of 8 kg



Application of nora AC 100

nora® accessories

Accessory range made of rubber matched to suit nora floor coverings for convincing solutions both in visual and functional terms. The materials are impact and shock resistant, do not contain any phthalate plasticizers and retain their functional reliability long term.

nora® skirting and skirting angles

Easy to clean, suitable for areas with stringent hygienic requirements.

1 SA 7002 Skirting outer angle

 22*
SA 7002 A

 22*
SA 7002 D

 8*
SA 7002 E

Suitable for Skirting S 3003

Art. 508

Delivery unit: as pieces

Connection dimensions:


A = 2.1 mm


D = 3.1 mm


E = 3.7 mm

*Further colours on request

2 S 3003 Skirting

 22*
S 3003 A

 22*
S 3003 D

 8*
S 3003 E

Matching with skirting angles SI 7001 and SA 7002.

Art. 726

Delivery unit: in rolls of 10 m

Connection dimensions:

A = 2.1 mm

D = 3.1 mm

E = 3.7 mm

3 SI 7001 Skirting inner angle

 22*
SI 7001 A

 22*
SI 7001 D

 8*
SI 7001 E

Suitable for Skirting S 3003

Art. 507

Delivery unit: as pieces

Connection dimensions:

A = 2.1 mm

D = 3.1 mm

E = 3.7 mm

nora® skirting

4 S 1024 U Height 100 mm

 41*
S 1024 U

For areas with stringent requirements in terms of appearance. The permanently resilient sealing lip of S 1024 U reliably accommodates pastille heights of up to 1 mm. Also suitable as wall stringer with raised-access floors.

Art. 713

Delivery unit: in rolls of 10 m

5 S 1023 U Height 60 mm

 102*
S 1023 U

For areas with stringent requirements in terms of appearance. The permanently resilient sealing lip of S 1023 U reliably accommodates pastille heights of up to 1 mm. Also suitable as wall stringer with raised-access floors.

Art. 712

Delivery unit: in rolls of 10 m

6 S 1008 U Height 50 mm

 32*
S 1008 U

Multi-purpose skirting
Adjoining skirting for nora® stair angles "TW"

Art. 705

Delivery unit: in rolls of 10 m

*Custom colours are available with a minimum order quantity of 300 m without surcharge. Please contact us for further information.

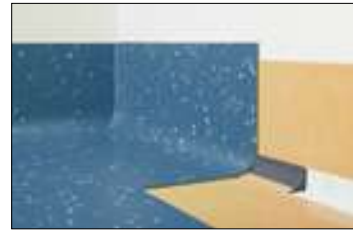
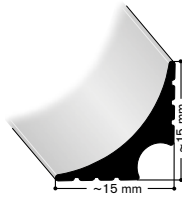
nora® cushioned-edge profile

H 9010

For optimum transition between the nora® floor coverings and the wall.

Delivery unit: 5 rolls of 10 m

Art. 7731



Skirting, S 1023 U

0007	1362	2457	5109	5318	6505	6515	6530	6711	7044
0319	1385	2635	5114	5321	6506	6516	6532	6712	7049
0702	1581	2666	5115	5325	6507	6517	6607	6713	7051
0716	1862	2925	5121	5329	6508	6518	6608	6714	7052
0749	2098	2944	5122	5337	6509	6519	6609	6721	7065
0882	2099	2946	5128	6173	6510	6522	6611	6722	7066
0884	2144	2949	5301	6178	6511	6523	6616	6723	7067
1146	2380	2950	5304	6500	6512	6525	6708	6725	7072
1150	2382	2962	5306	6501	6513	6528	6709	6728	7076
1162	2446	4618	5317	6504	6514	6529	6710	7033	7102
1279	2454	4877							

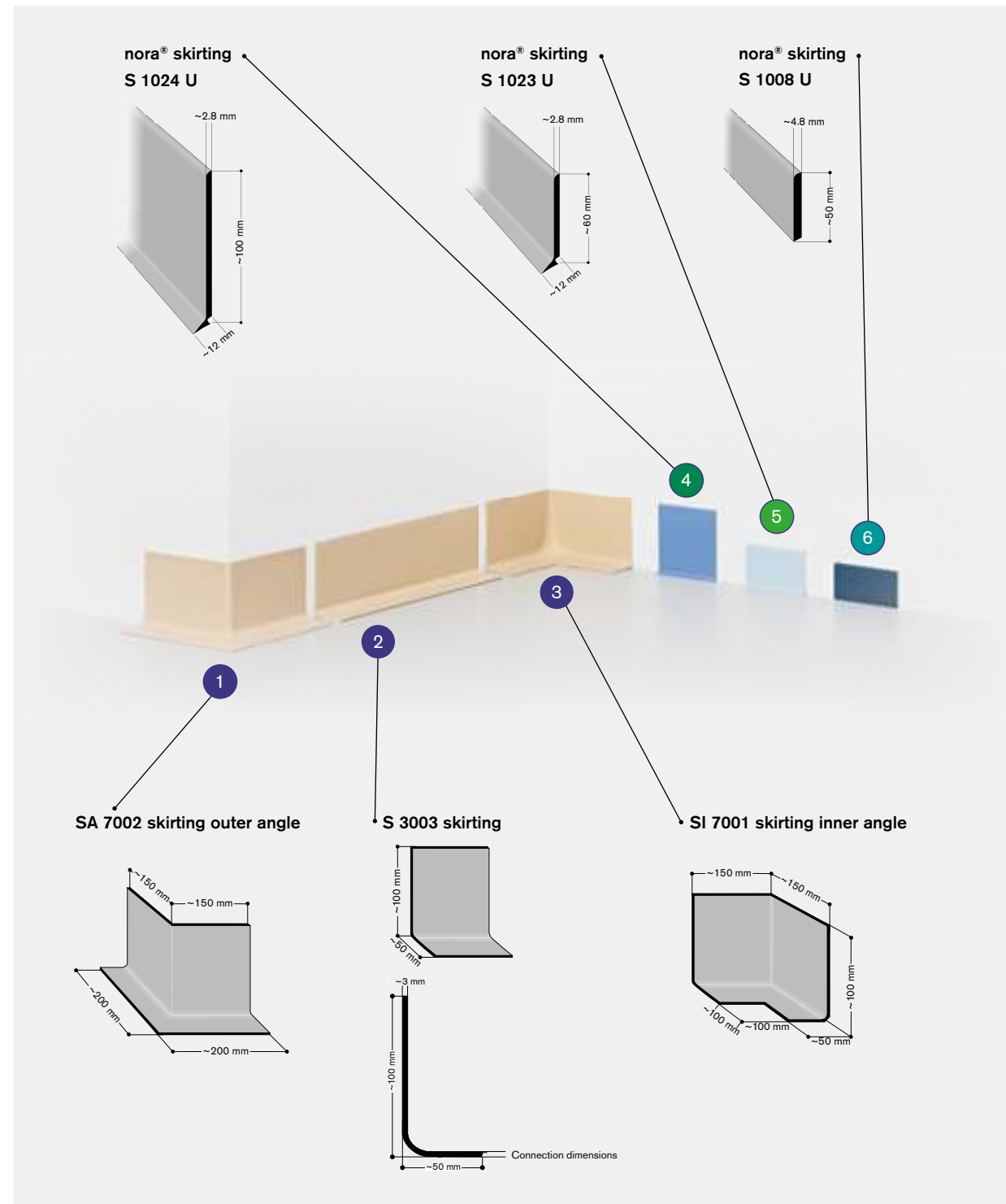
Skirting, S 1024 U

0007	0882	1385	2666	4877	5318	6506	6513	6523	7049
0319	0884	1862	2925	5301	5337	6507	6516	6525	7065
0702	1146	2099	2944	5304	6173	6508	6517	7033	7066
0716	1150	2382	2946	5306	6503	6509	6522	7047	7067
0749	1279								

Skirting, S 1008 U

0007	0733	2786	5110	5121	5303	5314	5318	5335	5343
0319	0749	5103	5114	5127	5304	5315	5325	5336	6507
0702	0882	5107	5115	5301	5313	5317	5329	5337	6522
0716	0884	5108	5116	5302					

Custom colours are available on request.
Please ask for minimum quantities and delivery times.



Skirting, S 3003 A/S 3003 D

Skirting inner angle, SA 7002 A/SI 7001 A/SA 7002 D/SI 7001 D

0882	2382	6504	6509	6517	6530	7033	7044	7052	7065	7067
2099	2944	6508	6513	6529	7031	7035	7051	7056	7066	7076

Skirting, S 3003 E

Skirting inner angle, SA 7002 E/SI 7001 E

5301	5304	5306	5317	5318	5321	5325	5329
------	------	------	------	------	------	------	------

Joint sealing compound

0007	2666	5113	5310	5363	6502	6530	7003	7040	7068	7117
0319	2681	5114	5311	5364	6503	6531	7004	7041	7069	7118
0597	2781	5115	5313	5365	6504	6532	7005	7042	7070	7119
0702	2786	5116	5314	5366	6505	6533	7006	7043	7071	7120
0716	2787	5117	5315	5367	6506	6534	7007	7044	7072	7201
0733	2848	5118	5317	5368	6507	6535	7008	7045	7073	7202
0749	2897	5119	5318	5508	6508	6536	7009	7046	7074	7203
0882	2931	5120	5319	5509	6509	6537	7010	7047	7075	7204
0884	2932	5121	5321	5512	6510	6601	7011	7048	7076	7205
1146	2940	5122	5324	5513	6511	6603	7012	7049	7077	7206
1150	2944	5123	5325	6007	6512	6613	7013	7050	7078	7207
1253	2946	5124	5329	6009	6513	6620	7014	7051	7101	7208
1254	2951	5125	5332	6014	6514	6624	7015	7052	7102	7209
1279	2962	5126	5335	6015	6515	6703	7016	7053	7103	7210
1385	4877	5127	5336	6016	6516	6708	7017	7054	7104	7211
1578	4881	5128	5337	6019	6517	6716	7018	7055	7105	7212
1581	5101	5129	5342	6020	6518	6720	7019	7056	7106	7213
1582	5102	5130	5343	6056	6519	6730	7020	7057	7107	7214
1585	5103	5131	5351	6102	6520	6901	7021	7058	7108	7216
2070	5104	5132	5352	6114	6521	6902	7031	7059	7109	7217
2142	5105	5301	5353	6129	6522	6903	7032	7060	7110	7218
2226	5106	5302	5354	6172	6523	6905	7033	7061	7111	7219
2306	5107	5303	5355	6178	6524	6912	7034	7062	7112	7220
2382	5108	5304	5356	6179	6525	6916	7035	7063	7113	7221
2452	5109	5305	5357	6325	6526	6918	7036	7064	7114	7222
2454	5110	5306	5358	6449	6527	6923	7037	7065	7115	7223
2457	5111	5307	5361	6500	6528	7001	7038	7066	7116	7224
2647	5112	5308	5362	6501	6529	7002	7039	7067		

Custom colours are available on request.
Please ask for minimum quantities and delivery times.

nora® special range

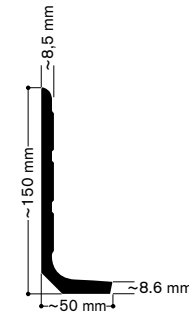
The special range offers profiles with different cross-sections for further applications.

Minimum order quantities on request.
The profiles shown here are examples only. Further individual designs are available on request.

nora® skirting s 3014 N

Special skirting for norament® 992 and norament® 992 grano

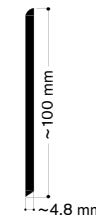
Art. 0734
Delivery unit: 2 m



nora® skirting s 1013 U

Skirting 10 cm high, also suitable for the use on other floor coverings

Art. 0706
Delivery unit: in rolls of 10 m

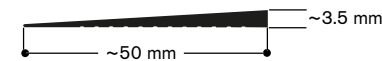


nora® transition profile A 9013 E

For a fast and easy transition solution between two different flooring heights, e.g. in case of floor on floor installations. The 3.5 mm connection dimension is also adjustable to smaller heights by cutting the profile accordingly.

Color: 0702

Art. 0804
Delivery unit: 2.5 m



nora® hot welding rod

For noraplan and noracare – available in matching colours for all floor coverings.

In general, nora floor coverings do not need to be sealed. The only exceptions are noraplan acoustic floor coverings. For our other floorings, we recommend sealing the joints when the flooring has been installed on a moisture-sensitive subfloor, in rooms with continual and intensive wet cleaning, in areas with stringent hygiene requirements, or for special requirements (e.g. in laboratories).

In operating theatres or other small surfaces where the joints of the skirtings are sealed with nora joint sealing compound, the compound can also be used for these surfaces to harmonise the installation process.

Art. 946

Round, Ø 4 mm, rolls of 100 m

nora® joint sealing compound

For all nora floor coverings

It is not generally necessary to seal nora floor coverings. The exceptions are electrostatically dissipative noraplan floorings. However, we do advise sealing the joints if the subfloor is moisture-sensitive, in rooms subject to intensive wet cleaning, or in areas with special hygiene requirements. In these cases, we recommend sealing all nora floorings.

Art. 928

300 ml cartridge

1 disposable cartridge, sufficient for 20–25 m

Please note: Joint cutter (art. no. 116950) and nora® liquid wax (art. no. 109914) may be ordered from our company.



Photos: © Elmar Witt

nora® pads

nora pads are suitable for daily cleaning and intensive cleaning on extremely soiled norament and noraplan rubber floor coverings. Cleaning and polishing are mechanical processes – just with water and absolutely no chemicals at all. nora pads can be used with most standard types of machine and are available in different sizes.



Art. 6688

nora® pad 0 – 10"		Ø 254 mm	delivery unit: 4 pieces in one carton
nora® pad 0 – 13"	nora® Pad 0	Ø 330 mm	delivery unit: 4 pieces in one carton
nora® pad 0 – 14"	for the cleaning with machines for structured noraplan floor coverings and noraplan uni, noraplan unita, noraplan ultra grip as well as for norament floor coverings with two-tone surface:	Ø 356 mm	delivery unit: 4 pieces in one carton
nora® pad 0 – 16"		Ø 406 mm	delivery unit: 4 pieces in one carton
nora® pad 0 – 17"		Ø 431 mm	delivery unit: 1 or 4 pieces in one carton

nora® pad 0 – 20"	for polishing cleaned floor coverings with a high speed machine for structured noraplan floor coverings and noraplan uni, noraplan unita, noraplan ultra grip as well as for norament floor coverings with two-tone surface:	Ø 508 mm	delivery unit: 1 or 4 pieces in one carton
--------------------------	--	----------	--

Art. 6627

nora® pad 1 – 10"		Ø 254 mm	delivery unit: 4 pieces in one carton
nora® pad 1 – 13"	nora® Pad 1	Ø 330 mm	delivery unit: 4 pieces in one carton
nora® pad 1 – 14"	for daily maintenance cleaning with machines for smooth noraplan floor coverings as well as for norament floor coverings with hammerblow or cubic structure:	Ø 356 mm	delivery unit: 4 pieces in one carton
nora® pad 1 – 16"		Ø 406 mm	delivery unit: 4 pieces in one carton
nora® pad 1 – 17"		Ø 431 mm	delivery unit: 1 or 4 pieces in one carton

nora® pad 1 – 20"	for polishing cleaned floor coverings with a high speed machine for smooth noraplan floor coverings and norament floor coverings with hammerblow or cubic structure:	Ø 508 mm	delivery unit: 1 or 4 pieces in one carton
--------------------------	--	----------	--

Art. 6628

nora® pad 2 – 17"	nora® Pad 2		
	for intermediate and intensive cleaning with a single disk machine for smooth noraplan floor coverings and norament floor coverings with hammerblow or cubic structure:	Ø 431 mm	delivery unit: 1 or 4 pieces in one carton

Art. 6629

nora® pad 3 – 17"	nora® Pad 3		
	for intensive cleaning of heavily soiled and scratched floor coverings with a single disk machine for smooth noraplan floor coverings and norament floor coverings with hammerblow or cubic structure:	Ø 431 mm	delivery unit: 1 piece in one carton



nora 4you

nora 4you provides solutions for your individual flooring needs. Flooring gives your rooms structure, personality and life. With nora 4you, you can design your rooms exactly as you want them. We offer customised solutions that make your rooms special and distinctive in a way that is important to you. Anything is possible.

Quality and functionality are crucial criteria when selecting floor coverings. With nora 4you, we go one step further and put an additional focus on design and individuality. This allows you to creatively design, structure or accentuate your surfaces with colours, patterns and inlays according to your specific requirements and ideas.

Inlays

Create inlays based on our templates or design compositions of your own imagination. At our inlay centre we can process your images, drawings or image files to create your own design. Our state-of-the-art ultrasonic cutting machine cuts almost any motif into 100% matching pieces that can be laid without sealing the joints. To guarantee easy installation, we supply inlays up to a size of 1.60 x 1.22 metres, fully assembled and ready for laying. For large-sized inlays, we provide the floor layer with detailed laying plans.

Room Inlays

Room inlays are design elements. Depending on the colour combination, design language and combination of materials, they change and shape the room. Whether used as part of a comprehensive design concept or as a decorative eye-catcher, inlays make a statement that can't be overlooked. They help give spaces a distinctive identity.



Erika-Fuchs-Haus, Schwarzenbach an der Saale, Germany



© Werner Huthmacher

Routing systems

With nora 4you, you can adapt your routing system to your individual spatial circumstances. For example, colour-coded stripes or signs in the floor help people to orientate themselves as they move through different sections or parts of the building.

In addition, nora offers a variety of inlay options for flooring or skirting boards to mark escape routes with integrated light strips or other lighting elements.



© nora

Choose from our standard symbols or design your own

nora offers you a wide range of standardised templates, which we can customise according to your requirements. In addition to our standard symbols, we will be happy to design and create individual symbols or logos to suit your specific requirements.



© nora



Notting Hill Preparatory School, London, UK
© Hanson Architects | Davide Saibene

Planks and Tiles

Our plank and tile concept gives you almost limitless freedom to design your rooms the way you want. You can use any combination of plank or tile shapes and colours to influence the overall design of the room. The laying pattern also has a decisive influence on the sense of space. Planks enable you to create a distinctive and individual spatial effect in variants that are precisely tailored to your needs. Even with tiles, you can realise different laying patterns or set unusual accents.

Our plank formats are available with most noraplan designs. We deliver planks in your choice of colour and in five standard sizes optionally in 2 mm or 3 mm. In addition, with monochrome installations of planks or tiles, the edges can be chamfered to accentuate the plank or tile character and create an elegant joint pattern. Talk to us about your ideas and we will be happy to support you with individual planning.

Different formats for endless possibilities and individual room design.

noraplan®



~ 610 mm x 305 mm



~ 1220 mm x 405 mm



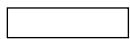
~ 610 mm x 610 mm



~ 610 mm x 205 mm

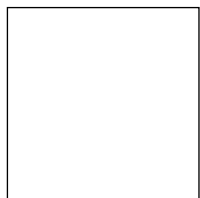


~ 1220 mm x 202.5 mm



~ 610 mm x 152.5 mm

norament®



~ 1004 mm x 1004 mm

norament® 926 arago



~ 1004 mm x 502 mm

Further plank and tile sizes are available on request. Please ask for minimum quantities.



Custom colours

With over 300 colours and shades, even our standard product programme provides outstanding choice. However, if you are looking for a different colour, we will be happy to develop an individual colour for your project. We can customise almost any colour using samples or colour codes (NCS, RAL, Pantone) and implement your wishes in the flooring. For example, you can design your entire building in one shade without compromising the functional properties of your flooring.

You can choose from different:

- base colours
- granules
- surface structures

Please ask for minimum quantities and delivery times.



Music Academy Barenboim-Said Akademie, Berlin, Germany

	Test method	Requirements	Average test results from running production						
			926	926 arago 926 castello 926 grano 926 pado 926 satura	825	926 kivo	992 992 grano	975 LL	
CE conformity	EN 14041		← Manufacturer: nora systems GmbH, D-69469 Weinheim →						
DoP-No.	EN 14041		0021		0004	0021	0023	0024	
Thermal conductivity	EN 10456	$\lambda = 0.17 \text{ W/(mK)}$	← Fulfilled →						
Dynamic coefficient of friction	EN 13893	DS	← Fulfilled →						
Reaction to fire	EN 13501-1	Not bonded	C _i -s1		C _i -s1	C _i -s1	C _i -s2	B _i -s1	
Reaction to fire	EN 13501-1	Bonded on mineral subfloor	B _i -s1		B _i -s1	B _i -s1	C _i -s1	-	
Properties acc. to EN 1817/EN 12199									
Thickness	EN ISO 24346	Mean value ± 0.20 mm according to EN 12199	4 mm		3.2 mm		9 mm (Art. 1956)		
		Mean value ± 0.15 mm according to EN 1817		3.5 mm		2.7 mm	9 mm (Art. 1955)	3.5 mm	
Dimensional stability	EN ISO 23999	± 0.4 %	← ± 0.2 % →						± 0.1 %
Cigarette-burn resistance	EN 1399	Procedure A (stuffed out) ≥ level 4 Procedure B (burning) ≥ level 3	← Fulfilled →						
Flexibility	EN ISO 24344, procedure A	Mandrel diameter 20 mm, no fissuring	← Fulfilled →						
Hardness	ISO 48-4	≥ 70 Shore A (EN 12199) ≥ 75 Shore A (EN 1817)	82 Shore A	82 Shore A	87 Shore A	82 Shore A	70 Shore A	85 Shore A	
Residual indentation	EN ISO 24343	Mean value ≤ 0.25 mm at thickness ≥ 3.0 mm Mean value ≤ 0.20 mm at thickness < 3.0 mm	0.12 mm	0.12 mm	0.12 mm	0.12 mm	0.25 mm	0.07 mm	
Abrasion resistance at 5 N load	ISO 4649, procedure A	≤ 250 mm ³	115 mm ³	115 mm ³	130 mm ³	115 mm ³	90 mm ³	120 mm ³	
Colour fastness to artificial light	ISO 105-B02, procedure 3, test conditions 6.1 a)	At least level 6 on the blue scale; ≥ level 3 on the grey scale	← Grey scale ≥ level 3 acc. to ISO 105-A02 →						
Classification	EN ISO 10874	Commercial/Industrial	34/43	34/43	32/41	34/43	34/43	34/43	
Additional technical properties									
Toxicity of fire gases	DIN 53436		Carbonisation gases are non-toxic		-	Carbonisation gases are non-toxic		-	
Anti-slip properties	DIN EN 16165	According to DGVV 108-003	R 9	R 9 R 9 arago = R 10 castello = R 10 grano Art. 1870 = R 10 pado = R 10	R 9	R 10	R 9	R 9 975 LL serra/ kivo inspired = R 10	
			A	grano/Art. 1870 = A, B arago = A, B	-	-	-	-	
Improvement in footfall sound absorption	ISO 10140-3		12 dB	10 dB	9 dB	8 dB	15 dB	8 dB	
Effect of chemicals	EN ISO 26987		← Resistant depending on concentration and time of exposure* →						
Electrical insulation properties	EN 1081 R1		← > 10 ⁹ Ohm →						
Electrical propensity when walked upon	EN 1815		← Antistatic, charging in case of rubber soles < 2 kV →						
Effect of a castor chair	EN ISO 4918		← Suitable if castor wheels, type W, according to EN 12529 are used →						
Underfloor heating	EN 1264-2		← Suitable, max. 35° C →						

* In case of increased impact of oils, greases, acids, alkalis and other aggressive chemicals please contact us.

EN 1817: Specification for homogeneous and heterogeneous smooth elastomer floor coverings
EN 12199: Specification for homogeneous and heterogeneous profiled elastomer floor coverings

Colour variations due to different production batches as well as technical alterations to improve the product have to be accepted.



	Test method	Requirements	Average test results from running production					
			uni 2.0 mm	convia 2.0 mm lona 2.0 mm senitica 2.0 mm signa 2.0 mm stone 2.0 mm valua 2.0 mm	unita 2.0 mm	ultra grip 2.0 mm	senitica 3.0 mm signa 3.0 mm valua 3.0 mm	senitica acoustic signa acoustic stone acoustic
CE conformity	EN 14041		← Manufacturer: nora systems GmbH, D-69469 Weinheim →					
DoP-No.	EN 14041		0018	0016	0010	0016	0017	
Thermal conductivity	EN 10456	$\lambda = 0.17 \text{ W/(m·K)}$	← Fulfilled →					
Dynamic coefficient of friction	EN 13893	DS	← Fulfilled →					
Reaction to fire	EN 13501-1	Not bonded	B _f -s1	B _f -s1, bonded	C _f -s1	B _f -s1, bonded	C _f -s1	
Reaction to fire	EN 13501-1	Bonded on mineral subfloor	B _f -s1	B _f -s1	C _f -s1	B _f -s1	B _f -s1	
Properties acc. to EN 1817/EN 1816								
Thickness	EN ISO 24346	Mean value without foam backing ± 0.15 mm	2.0 mm	2.0 mm	2.0 mm	3.0 mm	-	
		Mean value with foam backing ± 0.20 mm	-	-	-	-	4.0 mm	
Dimensional stability	EN ISO 23999	± 0.4 %	← ± 0.3 % →					
Cigarette-burn resistance	EN 1399	Procedure A (stubbed out) level ≥ 4 Procedure B (burning) level ≥ 3	← Fulfilled →					
Flexibility	EN ISO 24344, procedure A	Mandrel diameter 20 mm, no fissuring	← Fulfilled →		Not fulfilled	Fulfilled	-	Fulfilled
Hardness	ISO 48-4	≥ 75 Shore A	94 Shore A	92 Shore A	90 Shore A	92 Shore A	85 Shore A	
Residual indentation	EN ISO 24343	Mean value ≤ 0.15 mm at thickness < 2.5 mm	0.03 mm	0.03 mm	0.05 mm	-	-	
		Mean value ≤ 0.20 mm at thickness ≥ 2.5 mm	-	-	-	0.03 mm	-	
		acoustic: Mean value ≤ 0.25 mm	-	-	-	-	0.25 mm	
Abrasion resistance at 5 N load	ISO 4649, procedure A	≤ 250 mm ³	130 mm ³	150 mm ³	90 mm ³	150 mm ³	130 mm ³	
Colour fastness to artificial light	ISO 105-B02, procedure 3, test conditions 6.1 a)	At least level 6 on the blue scale; ≥ level 3 on the grey scale	← Grey scale ≥ level 3 acc. to ISO 105-A02 →					
Classification	EN ISO 10874	Commercial/Industrial	34/42	34/42	34/42	34/43	33/-	
Additional technical properties								
Toxicity of fire gases	DIN 53436		← Carbonisation gases are non-toxic →					
Anti-slip properties	DIN EN 16165	According to DGVU 108-003	R 9	R 9 lona = R 10 signa Art. 1690/2690 = R 10 stone Art. 149/249 = R 10 valua = R 10 unita = R 10	R 11	R 9 valua = R 10	stone acoustic: R 10 Others: R 9	
			-	stone Art. 149/249 + signa Art. 1690/2690: A; B	A; B; C	-	-	
	BS 7976 TRRL Pendulum		-	-	36+ Wet & dry	-	-	
	SATRA TM 144		-	-	Wet: > 0.6 Dry: > 0.45	-	-	
Improvement in footfall sound absorption	ISO 10140-3		6 dB	6 dB	7 dB	8 dB	20 dB	
Effect of chemicals	EN ISO 26987		← Resistant depending on concentration and time of exposure* →					
Electrical insulation properties	EN 1081 R1		> 10 ⁹ Ohm	> 10 ¹⁰ Ohm	> 10 ⁹ Ohm	> 10 ¹⁰ Ohm	> 10 ⁹ Ohm	
Electrical propensity when walked upon	EN 1815		← Antistatic, charging in case of rubber soles < 2 kV →					
Effect of a castor chair	EN ISO 4918		← Suitable if castor wheels, type W, according to EN 12529 are used →					
Underfloor heating	EN 1264-2		← Suitable, max. 35° C →					

* In case of increased impact of oils, greases, acids, alkalis and other aggressive chemicals please contact us.

EN 1817: Specification for homogeneous and heterogeneous smooth elastomer floor coverings
EN 1816: Specification for homogeneous and heterogeneous smooth elastomer floor coverings with foam backing

Colour variations due to different production batches as well as technical alterations to improve the product have to be accepted.

nora[®] nTx

	Test method	Requirements	Average test results from running production	
			noraplan [®]	norament [®]
			convia nTx** lona nTx** sentica nTx signa nTx stone nTx** valua nTx**	926 arago nTx 926 castello nTx 926 grano nTx 926 pado nTx** 926 satura nTx
CE conformity	EN 14041		← Manufacturer: nora systems GmbH, D-69469 Weinheim →	
DoP-No.	EN 14041		0027	0031
Thermal conductivity	EN 10456	$\lambda = 0.17 \text{ W/(m·K)}$	← Fulfilled →	
Dynamic coefficient of friction	EN 13893	DS	← Fulfilled →	
Reaction to fire	EN 13501-1		C _s -s1, bonded	C _s -s1, bonded
Properties acc. to EN 1817				
Thickness	EN ISO 24346	Mean value ± 0.15 mm according to EN 1817	2.1 mm or 3.1 mm**	3.6 mm
Dimensional stability	EN ISO 23999	± 0.4 %	± 0.3 %	± 0.2 %
Cigarette-burn resistance	EN 1399	Procedure A (stubbled out) ≥ level 4 Procedure B (burning) ≥ level 3	← Fulfilled →	
Flexibility	EN ISO 24344, procedure A	Mandrel diameter 20 mm, no fissuring	← Fulfilled →	
Hardness	ISO 48-4	≥ 75 Shore A	92 Shore A	82 Shore A
Residual indentation	EN ISO 24343	noraplan [®] nTx: Mean value ≤ 0.15 mm at thickness < 2.5 mm Mean value ≤ 0.20 mm at thickness ≥ 2.5 mm norament [®] nTx: Mean value ≤ 0.25 mm at thickness ≥ 3.0 mm Mean value ≤ 0.20 mm at thickness < 3.0 mm	0.05 mm	0.15 mm
Abrasion resistance at 5 N load	ISO 4649, procedure A	≤ 250 mm ³	150 mm ³	115 mm ³
Colour fastness to artificial light	ISO 105-B02, procedure 3, test conditions 6.1 a)	At least 6 on the blue scale, ≥ 3 on the grey scale	← Grey scale ≥ 3 acc. to ISO 105-A02 →	
Classification	EN ISO 10874	Commercial/Industrial	2.1 mm: 34/42 3.1 mm: 34/43	34/43
Additional technical properties				
Weight	EN ISO 23997		2.1 mm: ~ 3.36 kg/m ² 3.1 mm: ~ 5.08 kg/m ²	~ 5.40 kg/m ²
Slip resistance	DIN EN 16165	According to DGUV 108-003	R 9* R 10* (reflection-breaking surface, lona nTx, valua nTx)	R 9* R 10* (arago nTx, castello nTx, grano nTx with cubic structure, pado nTx)
Improvement in footfall sound absorption	ISO 10140-3		2.1 mm: 4 dB 3.1 mm: 5 dB	8 dB
Effect of chemicals	EN ISO 26987	Depending on concentration and time of exposure	← Resistant ^(A) →	
Electrical insulation properties	EN 1081 R1		> 10 ¹⁰ Ohm	> 10 ⁹ Ohm
Electrostatic behaviour when walked upon	EN 1815		← Antistatic, charging in case of rubber soles < 2 kV →	
Effect of a castor chair	EN ISO 4918		← Suitable if castor wheels, type W, according to EN 12529 are used →	
Fire behaviour/smoke behaviour				
Fulfills the requirements				
Fire behaviour	EN 13501-1		C _s -s1, bonded	C _s -s1, bonded
	EN 45545	Hazard Level	HL1*	-
Fire behaviour	ASTM E-648 / ISO 9239-1	Federal Railroad Administration	Class 1 (≥ 0.50 W/cm ²)*	-
Smoke density	ASTM E-662		After 1.5 minutes < 100, after 4 minutes < 200*	-
Toxicity of fire gases	DIN 53436		Carbonisation gases are non-toxic	Carbonisation gases are non-toxic
Adhesive characteristics				
Description			← Pressure-sensitive hot melt adhesive →	
Softening range			← approx. 122 - 134 °C →	
VOC			← 0 % →	

* Tested and certificated by an independent testing institute.
 ** Minimum quantities required.
 A) In case of increased impact of oils, greases, acids, alkalis and other aggressive chemicals please contact us.

EN 1817: Specification for homogeneous and heterogeneous smooth elastomer floor coverings
 Colour variations due to different production batches as well as technical alterations to improve the product have to be accepted.

nora[®] ESD floor coverings

	Test method	Requirements	Average test results from running production				
			norament [®]		noraplan [®]		
			928 grano ed	927 grano ec	sentica ed 2.0 mm signa ed 2.0 mm stone ed 2.0 mm	sentica ed 3.0 mm signa ed 3.0 mm	astro ec
CE conformity	EN 14041		← Manufacturer: nora systems GmbH, D-69469 Weinheim →				
DoP-No.	EN 14041		0005a	0022	0001	0001	0036
Thermal conductivity	EN 10456	$\lambda = 0.17 \text{ W/(mK)}$	← Fulfilled →				
Dynamic coefficient of friction	EN 13893	DS	← Fulfilled →				
Electrical behaviour	EN 1081	$ed \leq 10^9 \text{ Ohm}$	Fulfilled		← Fulfilled →		
		$ec \leq 10^9 \text{ Ohm}$		Fulfilled			Fulfilled
Reaction to fire	EN 13501-1	Not bonded	C _r -s1, bonded	C _r -s2	← C _r -s1 →		
Reaction to fire	EN 13501-1	Bonded on mineral subfloor	C _r -s1	C _r -s1	B _r -s1		C _r -s1

Properties acc. to EN 1817

Thickness	EN ISO 24346	Mean value ± 0.15 mm according to EN 1817	3.5 mm	3.5 mm	2.0 mm	3.0 mm	2.0 mm
Dimensional stability	EN ISO 23999	± 0.4 %	← ± 0.2% →		← ± 0.3% →		
Cigarette-burn resistance	EN 1399	Procedure A (stubbled out) ≥ level 4 Procedure B (burning) ≥ level 3	← Fulfilled →				
Flexibility	EN ISO 24344, procedure A	Mandrel diameter 20 mm, no fissuring	← Fulfilled →			-	Fulfilled
Hardness	ISO 48-4	≥ 75 Shore A (EN 1817)	84 Shore A	86 Shore A	← 95 Shore A →		
Residual indentation	EN ISO 24343	Mean value ≤ 0.15 mm at thickness < 2.5 mm Mean value ≤ 0.20 mm at thickness ≥ 2.5 mm	-		0.03 mm	-	0.01 mm
		Mean value ≤ 0.25 mm at thickness ≥ 3.0 mm Mean value ≤ 0.20 mm at thickness < 3.0 mm	0.05 mm		-	0.03 mm	-
Abrasion resistance at 5 N load	ISO 4649, procedure A	≤ 250 mm ³	90 mm ³	90 mm ³	130 mm ³		150 mm ³
Colour fastness to artificial light	ISO 105-B02, procedure 3, test conditions 6.1 a)	At least level 6 on the blue scale; ≥ level 3 on the grey scale	← Grey scale ≥ level 3 acc. to ISO 105-A02 →				
Classification	EN ISO 10874	Commercial/Industrial	34/43		34/42	34/43	34/42

Additional technical properties

Toxicity of fire gases	DIN 53436		Carbonisation gases are non-toxic	-	Carbonisation gases are non-toxic		
Anti-slip properties	DIN EN 16165	According to DGUV 108-003	R 10		stone ed: R 10 Others: R 9	R 9	
Improvement in footfall sound absorption	ISO 10140-3		10 dB	10 dB	6 dB	8 dB	6 dB
Effect of chemicals	EN ISO 26987		← Resistant depending on concentration and time of exposure* →				
Effect of a castor chair	EN ISO 4918		← Suitable if castor wheels, type W, according to EN 12529 are used →				
Underfloor heating	EN 1264-2		← Suitable, max. 35° C →				

Electrical behaviour**

Resistance to EPA ground	ESD STM 7.1/ IEC 61340-4-1	Measuring the installed floor at 23 °C (± 2 °C) and ≥ 25 % r.h.	10 ⁶ – 9 x 10 ⁷ Ohm	< 10 ⁶ Ohm	10 ⁶ – 9 x 10 ⁷ Ohm	< 10 ⁶ Ohm
		Measuring the installed floor at 23 °C (± 2 °C) and < 25 % r.h., installed on an appropriate subfloor build up	10 ⁶ – 10 ⁹ Ohm***	< 10 ⁶ Ohm	10 ⁶ – 10 ⁹ Ohm***	< 10 ⁶ Ohm
Operator system – Resistance to ground	ESD STM 97.1/ IEC 61340-4-5	For the system floor/conductive footwear (R < 5 x 10 ⁶ Ohm) measuring the installed floor at 23 °C (± 2 °C) and ≥ 25 % r.h.	≤ 3.5 x 10 ⁷ Ohm	≤ 3.5 x 10 ⁷ Ohm	≤ 3.5 x 10 ⁷ Ohm	≤ 3.5 x 10 ⁷ Ohm
Body voltage generation	ESD STM 97.2 IEC 61340-4-5	Tested with defined conductive footwear at 23 °C and 12 % r.h.	← < 10 V →			< 100 V
Resistance to earth	EN 1081		10 ⁶ – 9 x 10 ⁷ Ohm	< 10 ⁶ Ohm	10 ⁶ – 9 x 10 ⁷ Ohm	< 10 ⁶ Ohm
Insulation resistance	VDE 0100-600		≥ 1 x 10 ⁵ Ohm	-	≥ 5 x 10 ⁴ Ohm	≥ 1 x 10 ⁵ Ohm

* In case of increased impact of oils, greases, acids, alkalis and other aggressive chemicals please contact us.

** If installed electrically dissipative and conductive in conformity with our installation instruction and according to the recommendations of the adhesive manufacturer. The used adhesive has to have a permanent resistance of R < 3 x 10⁵ Ohm according to EN ISO 22637.

*** If extremely low humidity values (< 25 % relative air humidity (= r.h.)) are expected for a longer period, please contact nora systems GmbH, Technical Service, for advice.

EN 1817: Specification for homogeneous and heterogeneous smooth elastomer floor coverings

Colour variations due to different production batches as well as technical alterations to improve the product have to be accepted.

noracare™

Designs: seneo, uneo

	Test method	Requirements	Average test results from running production
CE conformity	EN 14041		Manufacturer: nora systems GmbH, D-69469 Weinheim
DoP-No.	EN 14041		0035
Thermal conductivity	EN 10456	$\lambda = 0.25 \text{ W/(m·K)}$	Fulfilled
Dynamic coefficient of friction	EN 13893	DS	Fulfilled
Reaction to fire	EN 13501-1	Not bonded	C _f -s1
Reaction to fire	EN 13501-1	Bonded on mineral subfloor	B _f -s1

Properties acc. to EN 1817

Thickness	EN ISO 24346	Mean value $\pm 0.15 \text{ mm}$ acc. to EN 1817	2.0 mm
Dimensional stability	EN ISO 23999	$\pm 0.4 \%$	$\pm 0.3 \%$ *
Flexibility	EN ISO 24344, procedure A	Mandrel diameter 20 mm, no fissuring	Fulfilled
Hardness	ISO 48-4	$\geq 75 \text{ Shore A}$ acc. to EN 1817	96 Shore A
Residual indentation	EN ISO 24343	Mean value $\leq 0.15 \text{ mm}$ at thickness $< 2.5 \text{ mm}$	0.02 mm
Abrasion resistance at 5 N load	ISO 4649, procedure A	$\leq 250 \text{ mm}^3$	100 mm ³
Colour fastness to artificial light	ISO 105-B02, procedure 3	At least level 6 on the blue scale; \geq level 3 on the grey scale	Fulfilled
Classification	EN ISO 10874	Commercial/Industrial	34/42

Additional technical properties

Toxicity of fire gases	DIN 53436		Carbonisation gases are non-toxic
Anti-slip properties	DIN EN 16165	According to DGUV 108-003	R 10
			A
Improvement in footfall sound absorption	ISO 10140-3		5 dB
Effect of chemicals	EN ISO 26987		Resistant depending on concentration and time of exposure**
Electrical insulation properties	EN 1081 R1		$> 10^{10} \text{ Ohm}$
Electrical propensity when walked upon	EN 1815		Antistatic, charging in case of rubber soles $< 2 \text{ kV}$
Effect of a castor chair	EN ISO 4918		Suitable if castor wheels, type W, according to EN 12529 are used
Underfloor heating	EN 1264-2		Suitable, max. 35° C

* 6 h at 50° C

** In case of increased impact of oils, greases, acids, alkalis and other aggressive chemicals please contact us.

EN 1817: Specification for homogeneous and heterogeneous smooth elastomer floor coverings.

Colour variations due to different production batches as well as technical alterations to improve the product have to be accepted.

Smart Navigators to the perfect floor

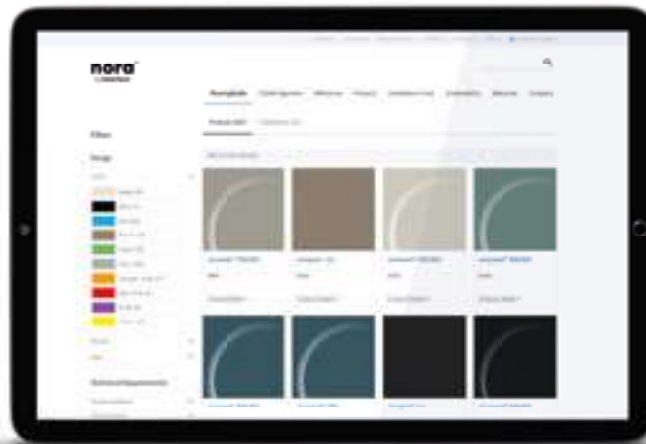
Select the floor that matches your demands



Flooring Finder

Specify the floor you need:

- select colour and design
- acoustic properties
- slip resistance
- ESD properties
- pressure load
- fire behaviour
- chemical resistance
- and more



Select the floor that matches your project's requirements



www.nora.com/flooringfinder

Experience it in your project's room

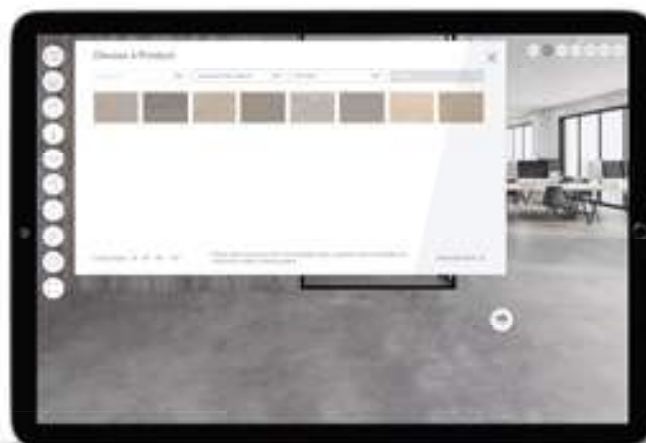


Room Designer

See how it looks in a real room:

- Use a sample room from the vast collection
- Or upload a room image from your project
- The software automatically recognizes the floor area

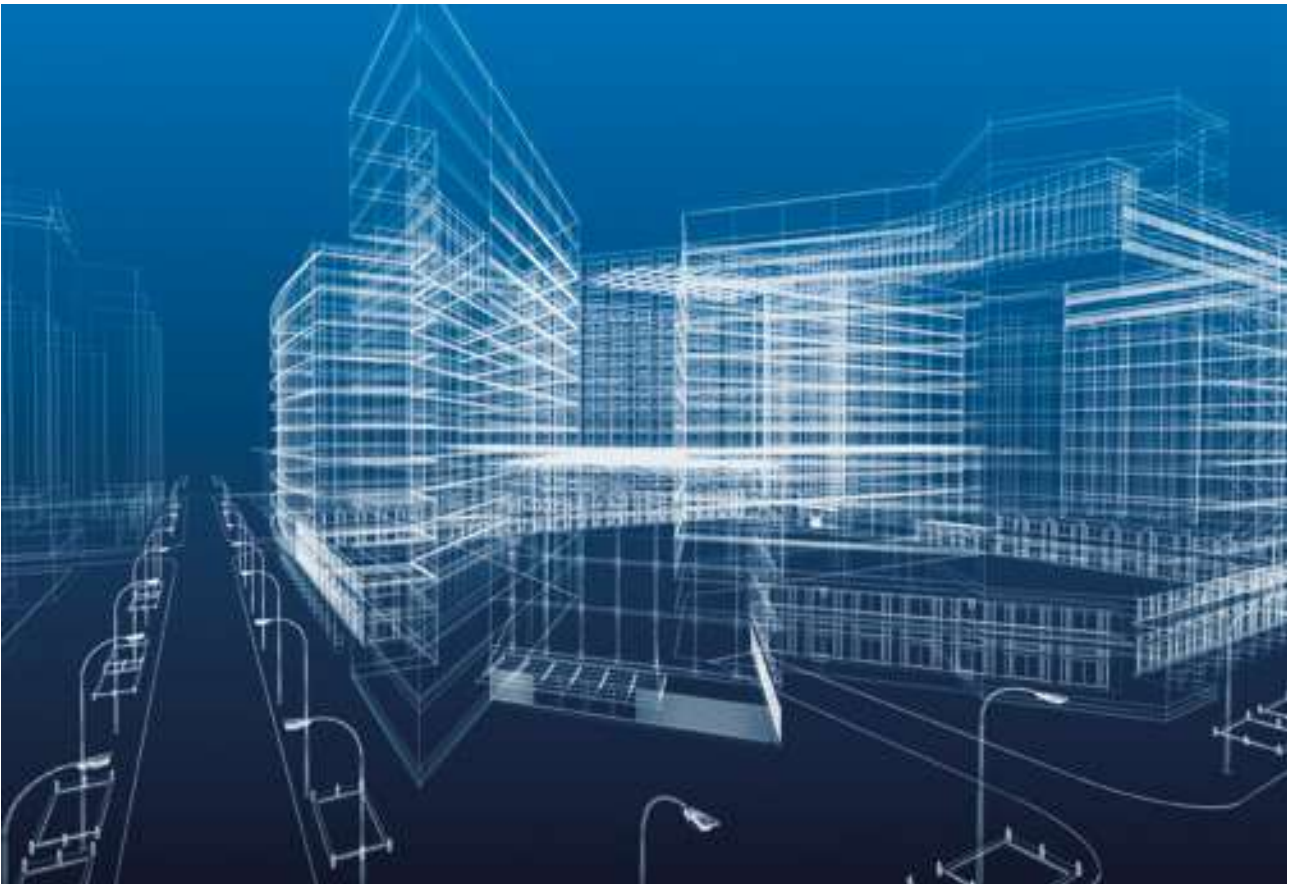
Print, save or share your visual experience with others.



Experience how the selected floor will look in your project

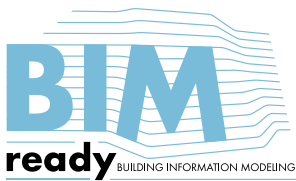


www.nora.com/roomdesigner



Building Information Modeling (BIM)

Building Information Modeling (BIM) is a software-supported method used to optimise the planning, construction and management of buildings. All relevant material and building data is digitally captured, managed, combined and cross-linked. This information can be used throughout the entire life cycle of a building, starting with the documentation of planning, through cost and project management to building operation.



We offer BIM files of the floor covering and stairtread standard portfolio for download on our website. Further information can be found at bim.nora.com.

Please note

norament[®], noraplan[®] and noracare[™] have been developed for indoor installation. nora[®] floor coverings are not suitable for installation in outdoor applications or in areas with constant and direct wet loads.

The particulars given in this brochure are for informational purposes only concerning the products presented. They represent descriptions or designations, but not any warranted qualities. This information cannot cover all possible service conditions which our floor coverings may encounter.

If the floor covering is going to be exposed to out-of-the-ordinary service conditions and stresses (e.g. extreme UV radiation, chemical substances or other aggressive media), please contact us for advice.

We will be pleased to supply you on request with flooring samples to enable you to carry out in-house tests. We reserve the right to alter technical values as part of an ongoing product improvement process.

This brochure as well as the pictures and illustrations it contains are subject to a copyright owned by or licensed for nora systems GmbH, Weinheim, and may be used with its previous written approval only.

The nora brand and all other registered trademarks used in this document are registered to nora systems GmbH or its affiliates or subsidiaries. Other labels used here are trademarks of their respective owners.

Produced on 100% recycled paper. Carbon neutral production with organic inks, based on renewable raw materials.



